



SF Environment

Our home. Our city. Our planet.

A Department of the City and County of San Francisco

Energy Efficiency Best Practices Forum

June 20, 2013

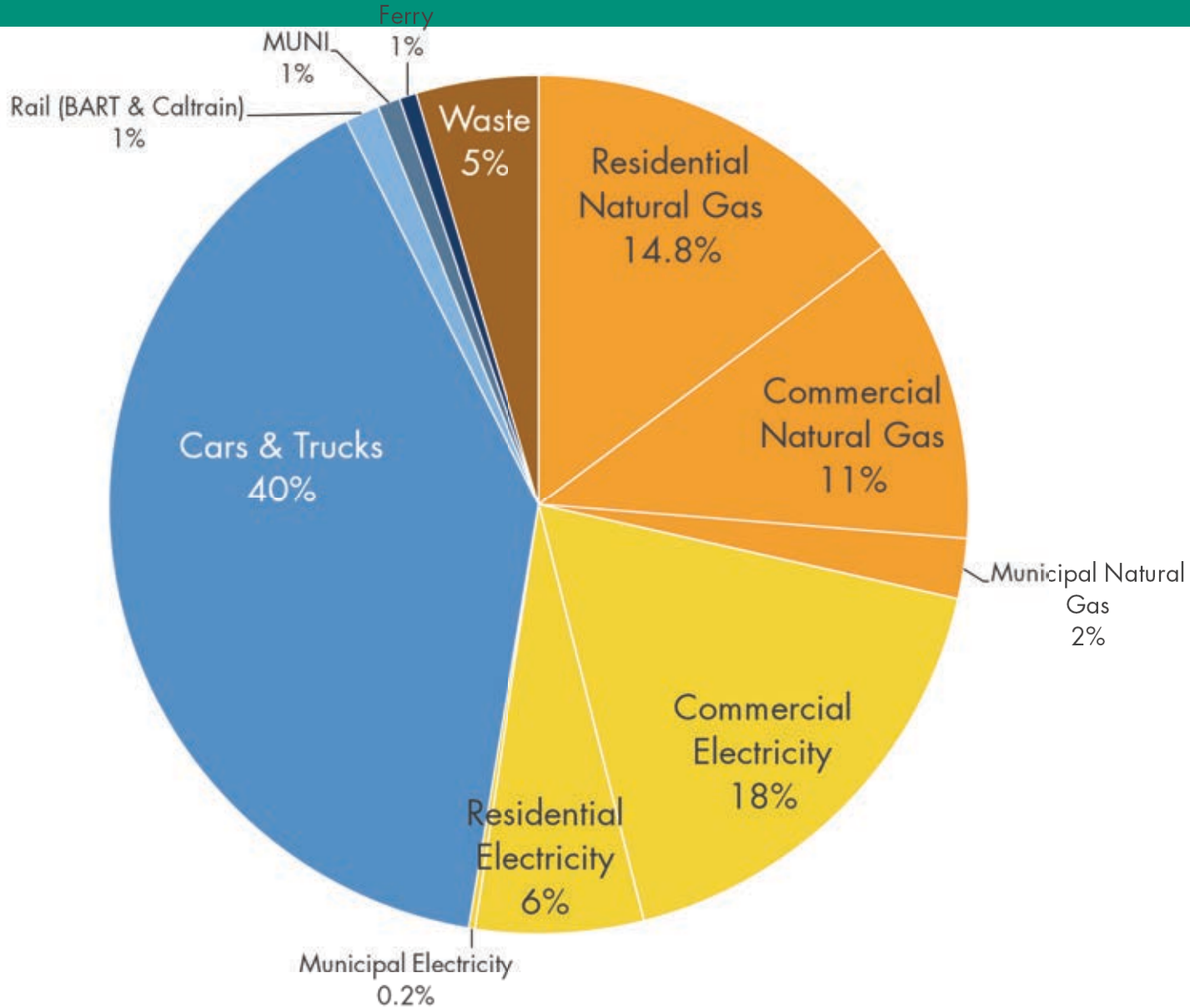
Cal Broomhead



San Francisco Greenhouse Gas Emissions By



Source
2010



Engagement



Energy Independence



New Century Transportation



Gray to Green



Photo by SFPlanning

Business Advisory



Microsoft Clipart

Prosperity and Environmental Justice

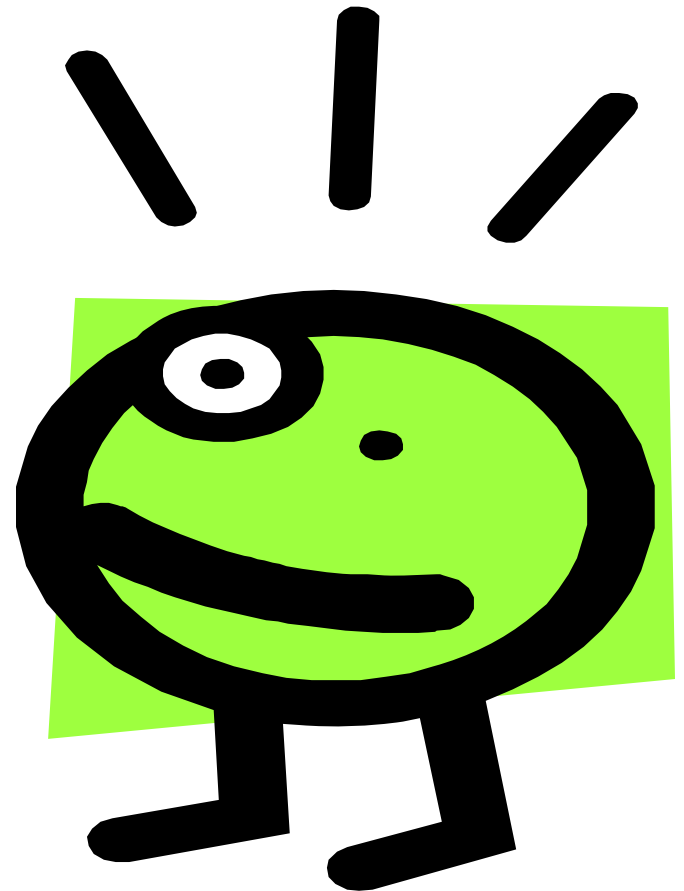


Microsoft Clipart

Prioritize



How big?



Endurance



Cost



Strategic



Synergy





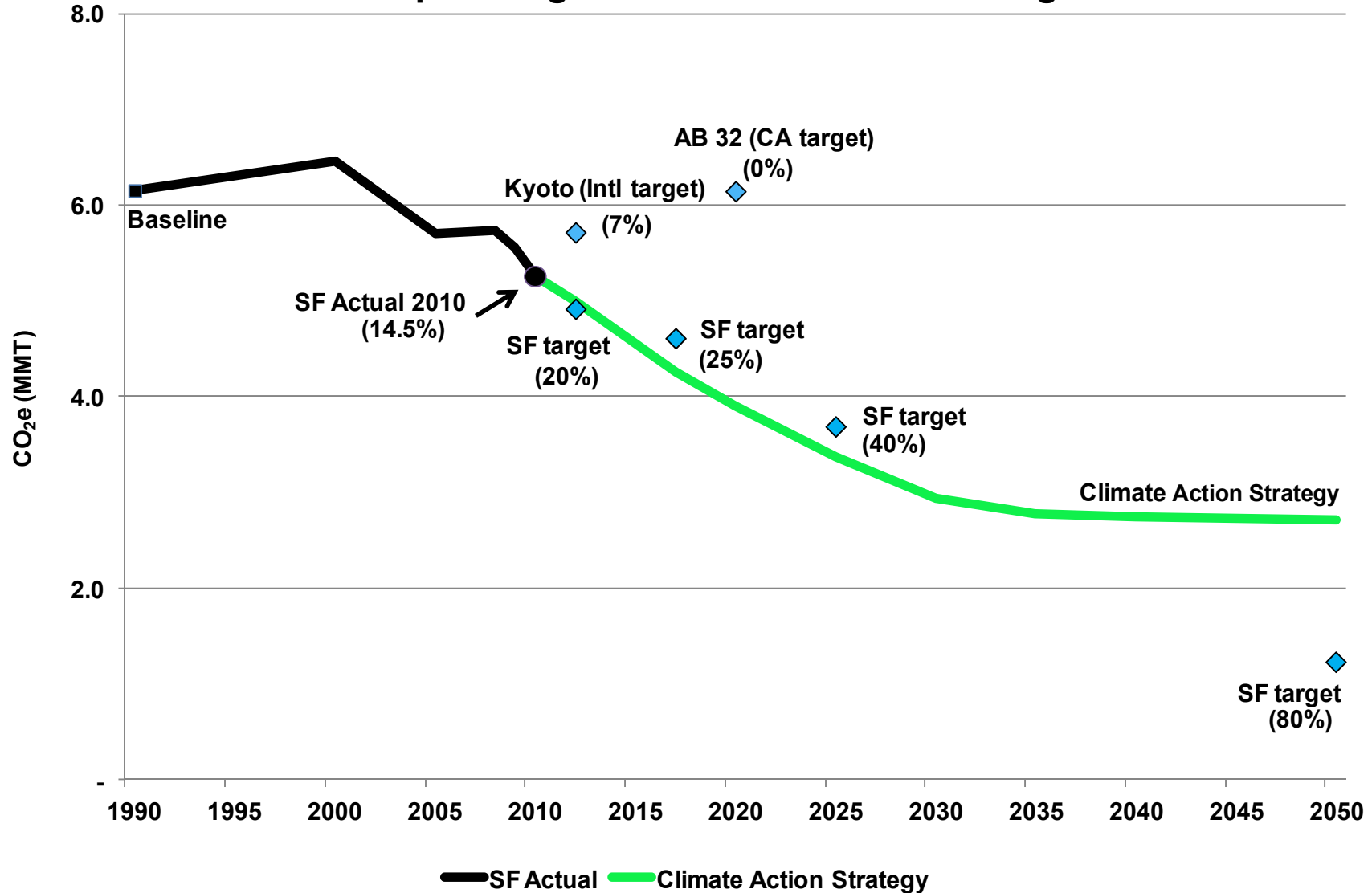


Score: 0-5

Weighting	Category	Project: Residential Time-of-Sale Ordinance
20	Size	1, residential is 20% of footprint, gas primarily
20	Endurance	4, low cost of enforcement, fees pay for it
20	Cost	2, easy to develop but strong opposition, requires Mayor strong support
15	Strategic	5, Captures a window of opportunity, supports fledgling market, eliminates a key barrier
15	Synergy	5, Leverages financing, achieves multiple goals (finds gas leaks & CO hazards, helps renters, informs buyer)
10	Growth	1, transferable to other local governments
Total= 100		



SF Citywide GHG Emissions Are On Track to Beat Upcoming International and State Targets



Zero Waste: 80% diversion





Retrofits



2 Plants Shut

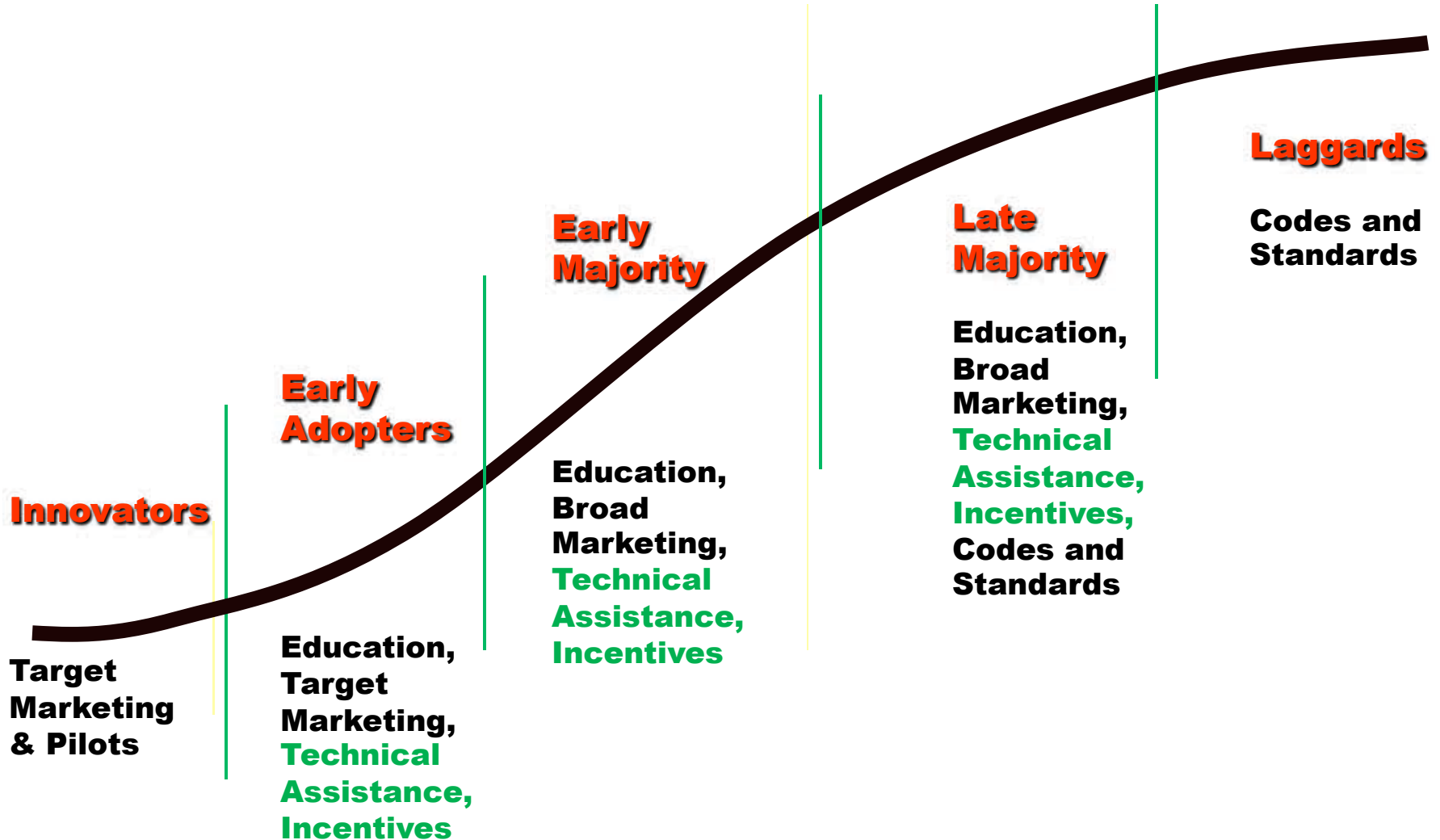


Hunters Point Power Plant

Closed
May 2006



Market stages





SF Wind Map



San Francisco Solar Map
A MAP OF SOLAR ACTIVITY AROUND THE CITY



Reset Map Back

Map | Satellite | Hybrid

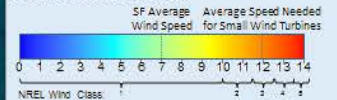
Welcome | Solar | Wind

Markers

Wind Installations

- Municipal
- Commercial
- Wind Case Study
- Wind Model Images
- Display Wind Resource Layer
- Residential
- Anemometers

Wind Resource(mph):



Zoom to your address

Enter your address

Go!

SF Wind Resources

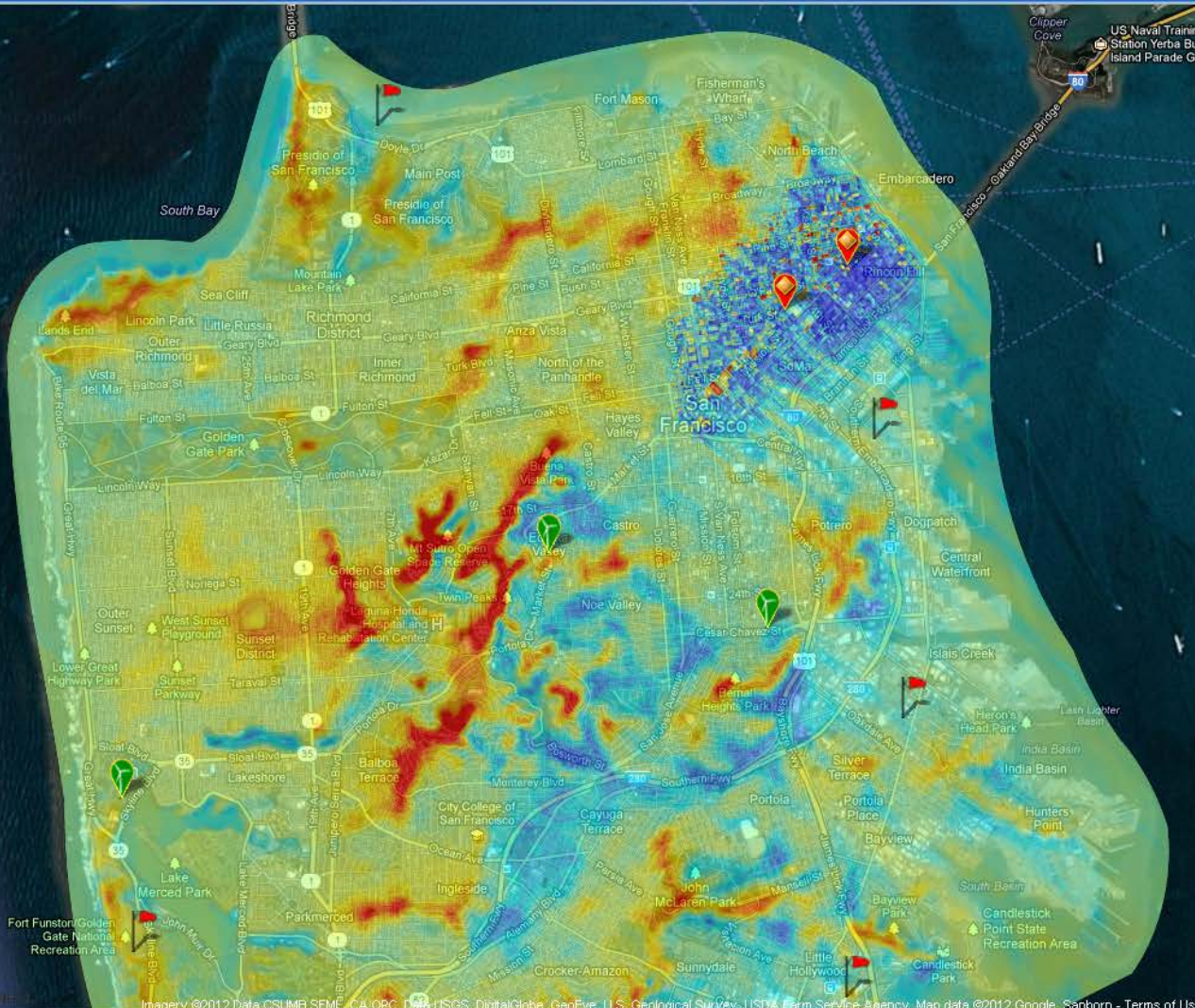
- San Francisco Urban Wind Task Force Recommendations
- San Francisco Public Utilities Commission Wind Monitoring Stations
- Pacific Energy Center Tool Lending Library lends anemometers for free
- California's Emerging Renewables Program Rebates
- Small Wind Certification Council consumer guide
- Small Wind Certification Council turbine certification status
- US Department of Energy Small Wind FAQ
- American Wind Energy Association Small Wind FAQ
- 2010 American Wind Energy Association Small Wind Global Market Study
- Small Wind Considerations
- San Francisco Wind Map Overview

SF Wind News

- The temporary suspension of the Emerging Renewables Program is lifted beginning November 9, 2011
- SWCC Issues First Full Certification and Consumer Label
- SPUR: Expand small-scale wind generation
- Assessing the Value of Small Wind Turbines
- San Francisco to Boost Small Wind
- Urban Wind Turbine: A Rare Species Spotted



Wind Map





Technical Assistance











Law: lighting retrofits





Cal Broomhead
Climate and Energy Programs Manager
cal.broomhead@sfgov.org
415-355-3706



SF Environment

Our home. Our city. Our planet.

SFEnvironment.org • (415) 355-3700

A Department of the City and County of San Francisco

© 2013 SF Environment All Rights Reserved

The author of this document has secured the necessary permission to use all the images depicted in this presentation. Permission to reuse or repurpose the graphics in this document should not be assumed nor is it transferable for any other use. Please do not reproduce or broadcast any content from this document without written permission from the holder of copyright.