

Promotoras as Partners in Advancing Clean Energy in Disadvantaged Communities



Viridis
CONSULTING



FRONTIER
energy

13th Annual California
Climate and Energy Forum

September 21, 2022 | 3:30-4:15pm

Leadership is about making others better as a result of your presence and making sure that impact lasts in our absence.

- Sheryl Sandberg

Nancy Barba,
Director





Nancy Barba

Director

Frontier Energy



Mabell Garcia Paine

President

Viridis Consulting



Stephanie Lemus

Director of Public Policy
& Community Affairs

**Clinica
Oscar Romero**



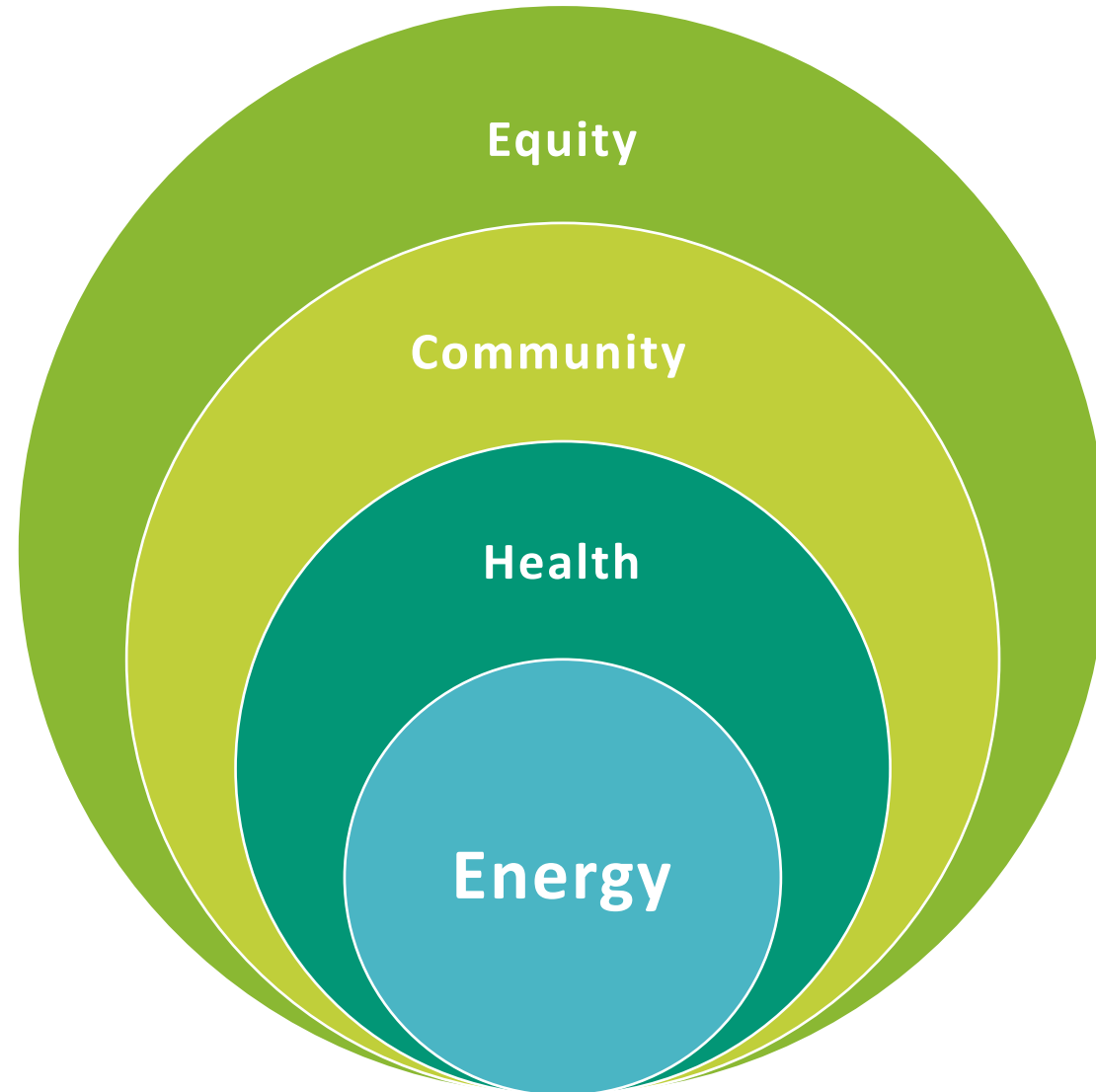
Susana Moncada

Promotora

**Clinica
Oscar Romero**

Introduction

Intersectionality of Advancing Clean Energy



What do we mean by **equity**?



Equity is an end state in which all groups have access to the resources and opportunities necessary to improve the quality of their lives.

Procedural Equity: inclusive, accessible, authentic engagement and representation in processes to develop or implement programs and policies.

Distributional Equity: fair distribution of benefits and burdens across all segments of a community, prioritizing benefits to those communities with highest need.

Structural Equity: institutionalize accountability; a recognition of the historical, cultural, and institutional dynamics and structures that have routinely benefited privileged groups and resulted in chronic, cumulative disadvantage for subordinated groups.

Transgenerational Equity: decisions consider generational impacts and don't result in unfair burdens on future generations.

Source: [OurCounty Los Angeles Countywide Sustainability Plan](#)

Success Stories





FrontierEnergy.com



Core Skills

- Energy Efficiency Programs
- Strategic Funding Consulting
- Energy Engineering
- Electric Transportation
- Advanced Power Generation
- Foodservice Energy & Water
- Cloud-based Software

Staff & Offices

- CA: San Ramon, Davis, West Sacramento, Los Angeles
- TX: Austin, San Antonio
- NY: Cazenovia
- MN: Chanhassen

Deep Expertise in a Small Nimble Shop.

- Clean Energy and Sustainability Consulting Services
- Experts in the space between strategy and implementation
- Services:
 - Program Strategy and Design
 - Grant funding strategy, partner strategy and writing
 - Business & Market Development
 - Innovation Management

Who We Are

Minority, woman-owned
clean energy advisory firm

Clients: Government Agencies,
Utilities, Airports, Clean Energy
Technologies, Program Implementers



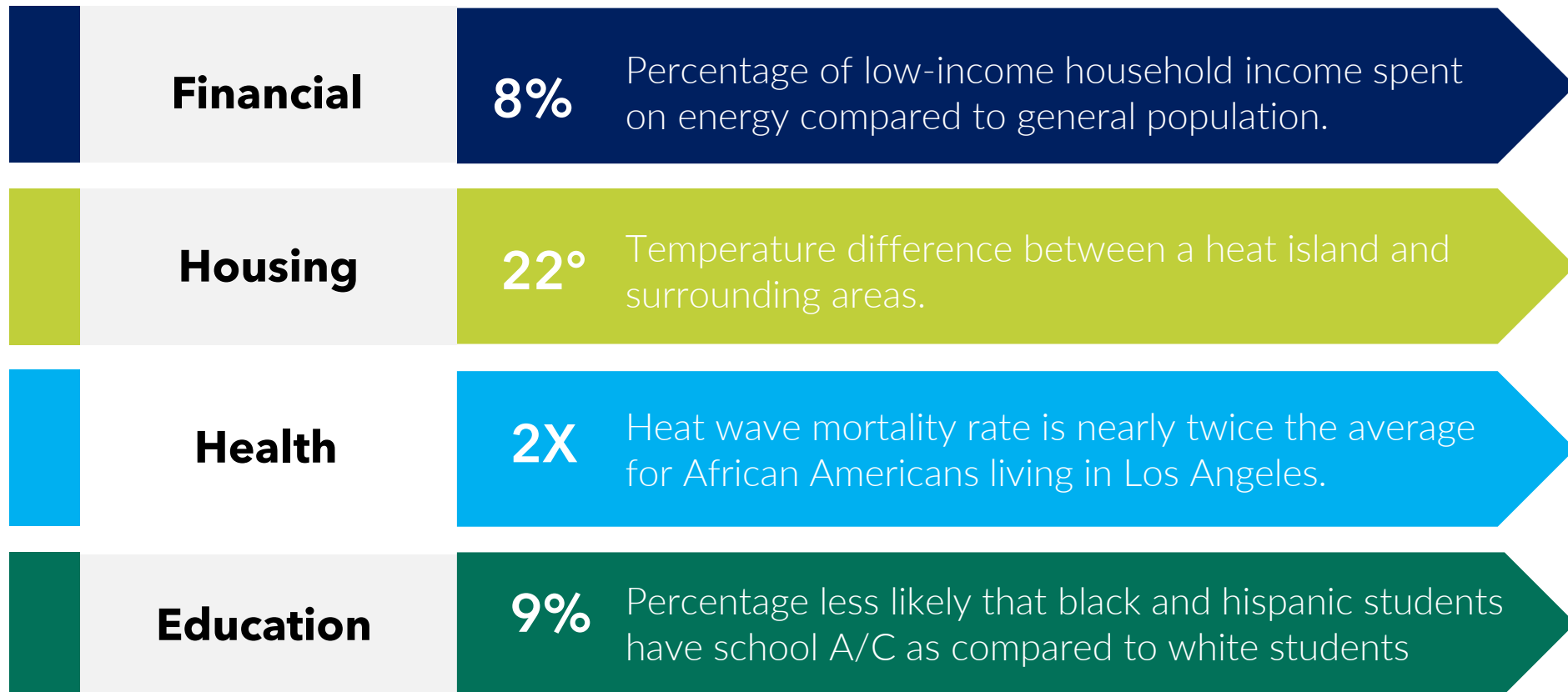
A sign cautions people not to dive from a bridge over the Kern River in Bakersfield, California.

Credit: Scott London / Alamy Stock Photo



Climate change is inequitable

Children, the elderly, low-income households, the socially isolated, people who rely on public assistance and people who lack access to A/C are disproportionately negatively affected.



Vulnerabilities of Disadvantaged Communities

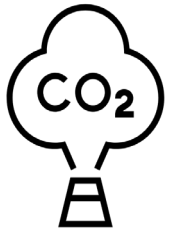


Disproportionate exposure to cement and asphalt and limited trees are common in low-income communities.

Study: The Climate Gap: Environmental Health and Equity Implications of Climate Change and Mitigation Policies in California, November 2011

Low Income Residents of Urban Heat Islands are more susceptible to heat-related morbidity and mortality due to increased temperatures, lack of tree cover and green space, low socio-economic status, lack of natural resources and low saturation of air-conditioning.

An Arizona State University study found that for every \$10,000 increase in a neighborhood's average household income, the local temperature drops half a degree.



Extreme Heat and Poor Air Quality

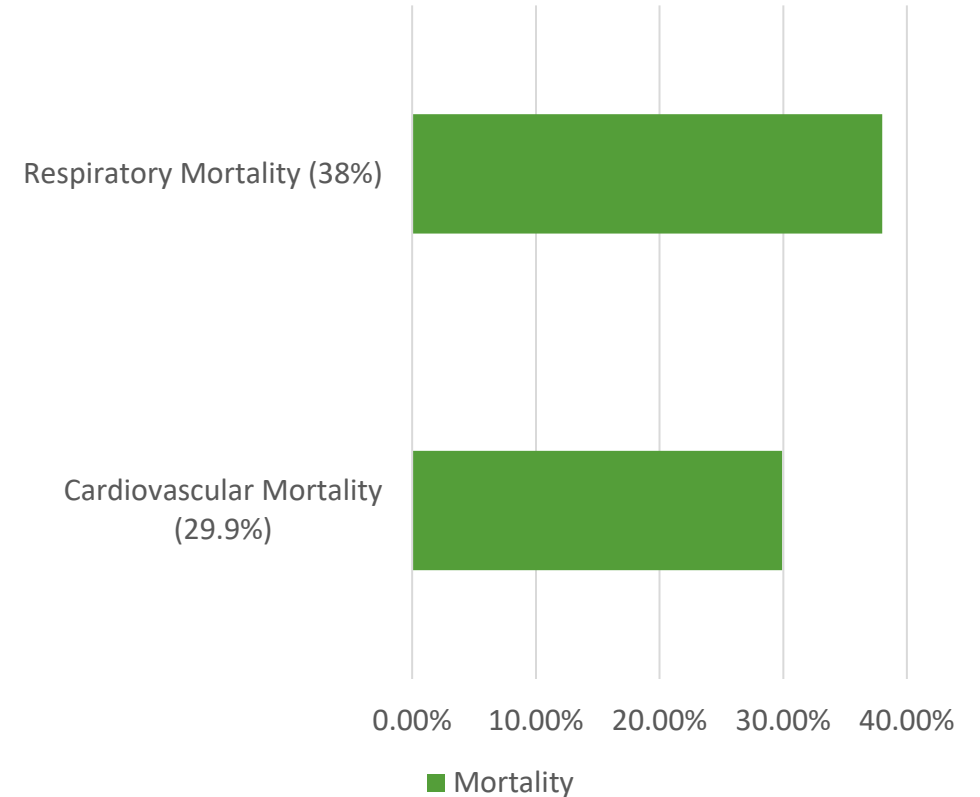
- Mortality associated with acute co-exposure to extreme heat and PM2.5 (particulate matter).

Implications



- When there is extreme heat and poor air quality, the mortality effects are larger beyond the sum of their individual effects.

Negative Impacts



Study: The Effects of Co-Exposure to Extremes of Heat and Particulate Air Pollution on Mortality in California: Implications for Climate Change, June 2022

Lack of Access to Home Air Conditioning in the Los Angeles-Long Beach Metropolitan Area:

- 59% of African-Americans
- 55% of Latinos
- 52% of communities living below the poverty line

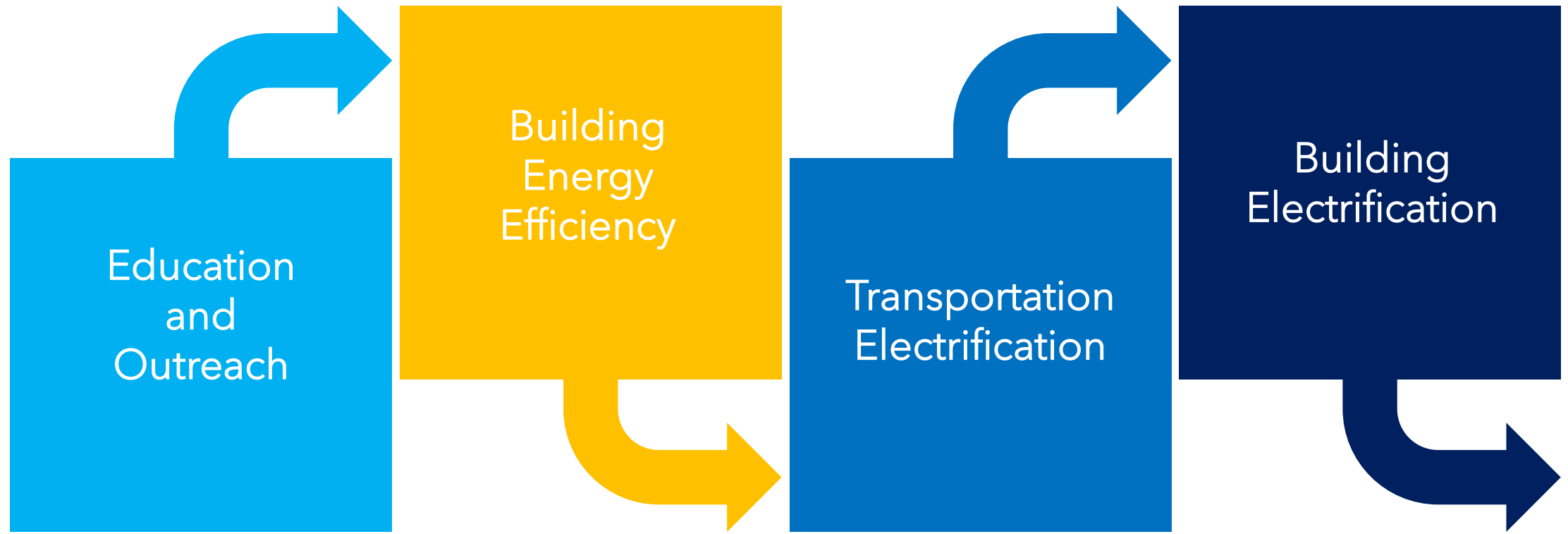
General Population: 40%



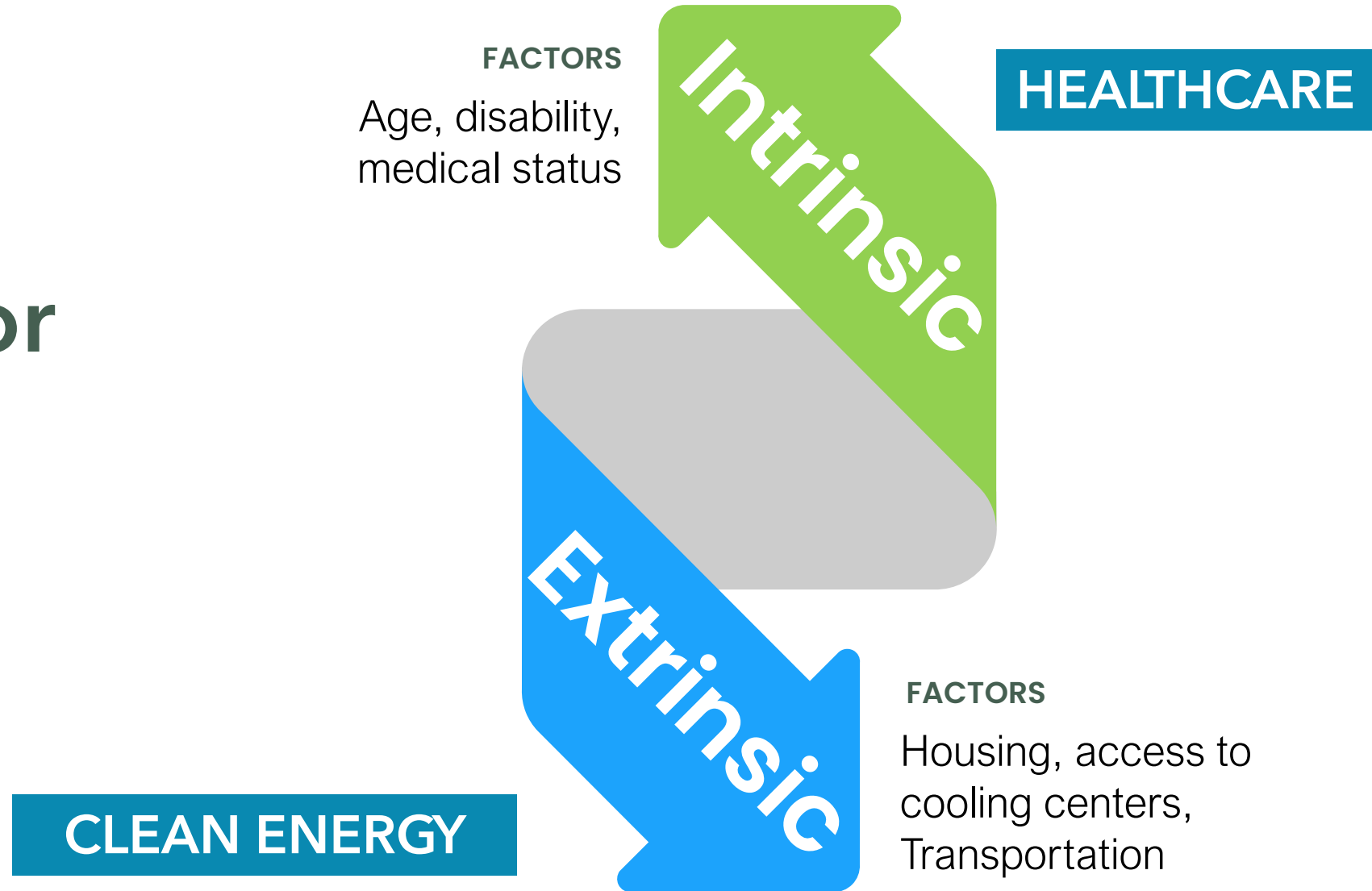
Study: The Climate Gap: Environmental Health and Equity Implications of Climate Change and Mitigation Policies in California, November 2011; USCB 2004

Decarbonization Strategies

Combining Healthcare and Clean Energy Strategies Delivered Through Promotoras Can Create More Holistic Solutions for Disadvantaged Communities

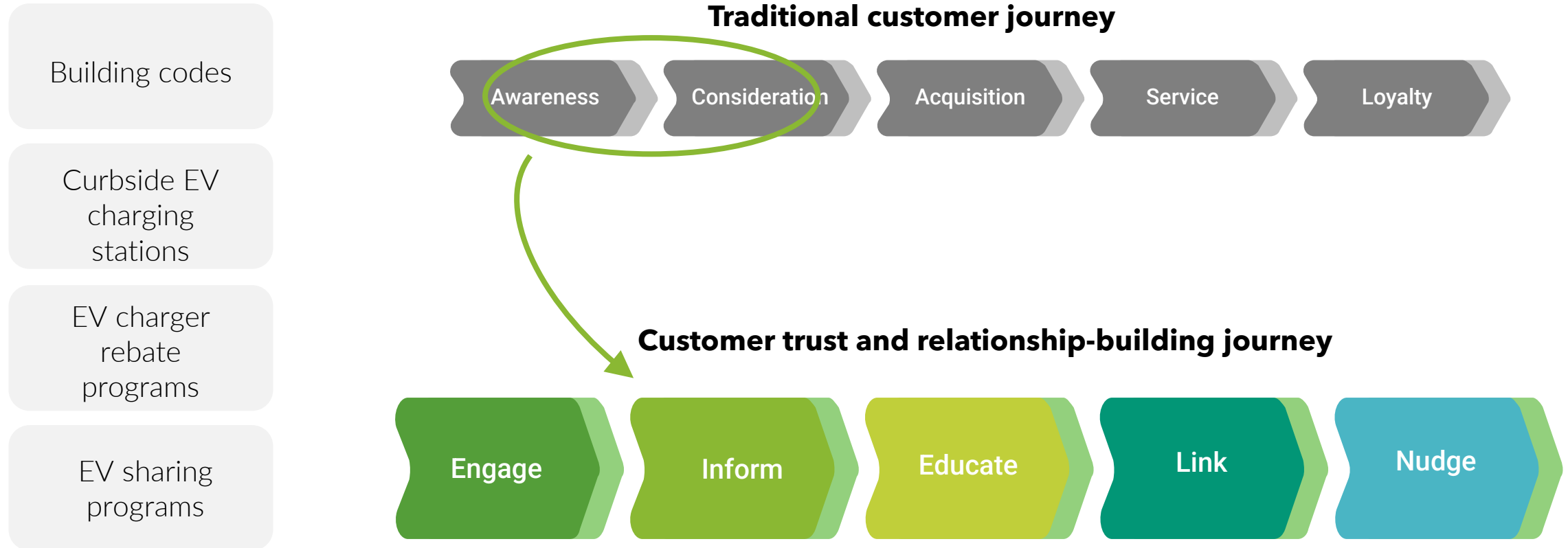


Factors Necessary for Climate Equity Solutions



Energy Efficiency Measures	Housing Effects	Possible Health Outcomes
Insulation and Air Sealing	<ul style="list-style-type: none"> ▪ Heating and cooling retained within building ▪ Comfortable indoor temperatures ▪ Reduced allergens 	<ul style="list-style-type: none"> ▪ Reduced deaths due to temperature extremes ▪ Reduced symptoms of respiratory disease
Improved Heating Systems	<ul style="list-style-type: none"> ▪ Heating provided to whole dwelling ▪ Cleaner burning heating systems ▪ Combustion by-products properly vented to outdoors ▪ Reduced gas and particulates 	<ul style="list-style-type: none"> ▪ Reduced deaths due to temperature extremes ▪ Reduced symptoms of respiratory disease ▪ Reduced stress and infectious disease
Improved Cooking Systems	<ul style="list-style-type: none"> ▪ Cleaner burning heating systems ▪ Combustion by-products properly vented to outdoors ▪ Reduced gas and particulates 	<ul style="list-style-type: none"> ▪ Reduced symptoms of respiratory disease ▪ Reduced risk of cancer
Improved Ventilation	<ul style="list-style-type: none"> ▪ Increased air flow within dwelling ▪ Reduced gas and particulates ▪ Reduced dampness ▪ Reduced mold 	<ul style="list-style-type: none"> ▪ Reduced symptoms of respiratory disease ▪ Reduced risk of cancer ▪ Reduced symptoms of cardiovascular disease ▪ Reduced arthritis ▪ Reduced depression

Identified Solutions



Our History



A coalition of Salvadoran civil war refugees sought to address the pressing mental and physical needs of their compatriots in the Los Angeles community and founded Clínica Romero in 1983 with the assistance of volunteer physicians.

- Core Values
- Compassion
- Commitment to Service
- Quality Care
- Respect & Dignity
- Teamwork



Dr. Hoffman (sitting); Dr. Mercedes Mendoza, dental clinic coordinator; patient and translator at Clínica Romero, Los Angeles 1984.



Aurora Martinez, one of the founder's of Clínica Romero, 1983.



Pediatricians providing care at Clínica Romero, Los Angeles, 1983.



First site for Clínica Romero, 1833 W. Pico Blvd., Los Angeles, 1983.



Anne Mello receives the first grant for Clínica Romero, Los Angeles, 1984.



Visit to Clínica Romero by Los Angeles mayor Tom Bradley; Anne Mello, Director; Dr. Jack Kent, Medical Director; Debbie Benada, R.N.; and E. Valentino, BOD President. Javier Huete and his daughter Celeste are standing by the door, Los Angeles, 1985.



Eduardo González and staff, Los Angeles, 1988.



Clínica Romero staff: Oscar López, Blanca Orellana, and Mario Hernández, Los Angeles, 1989.

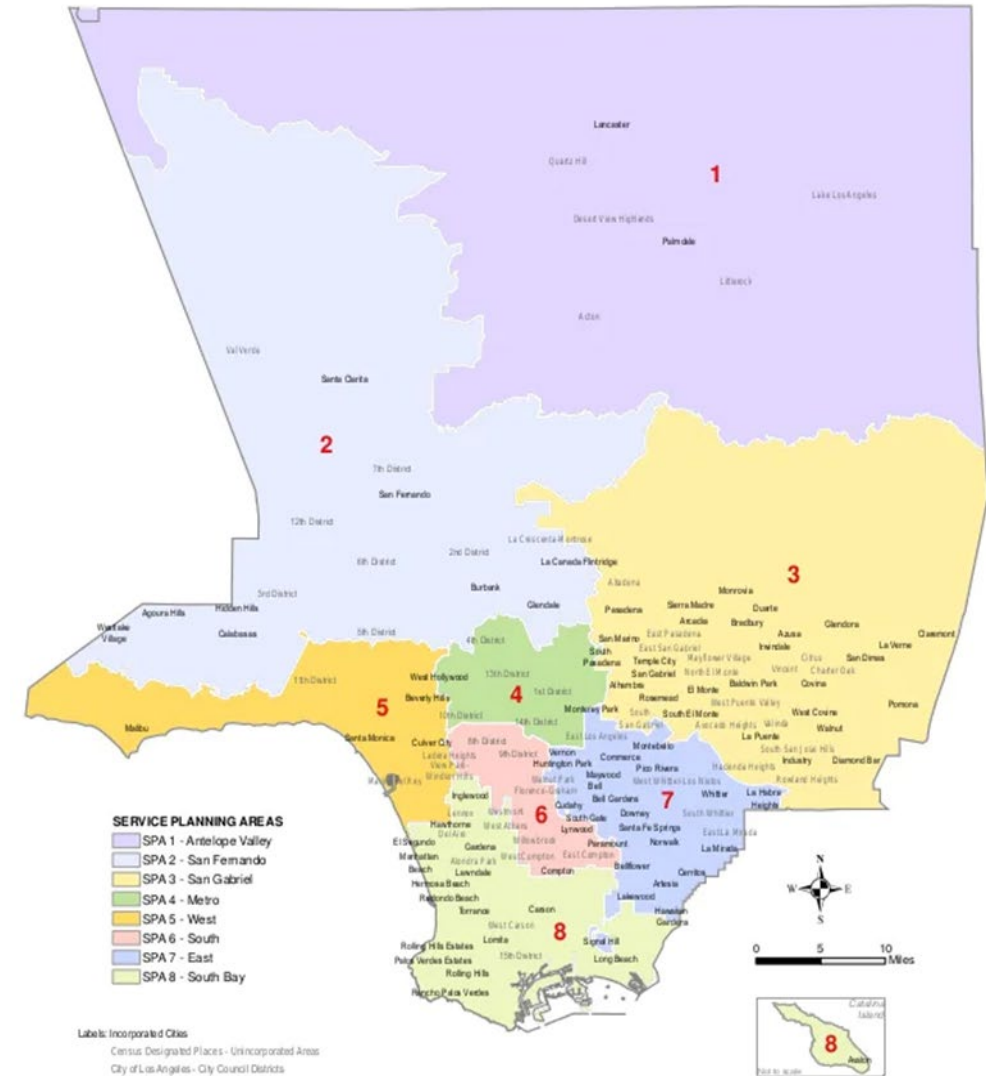


Dr. Kent was a former board member and provider for Clínica Monseñor Oscar A. Romero and died on June 24, 2019.

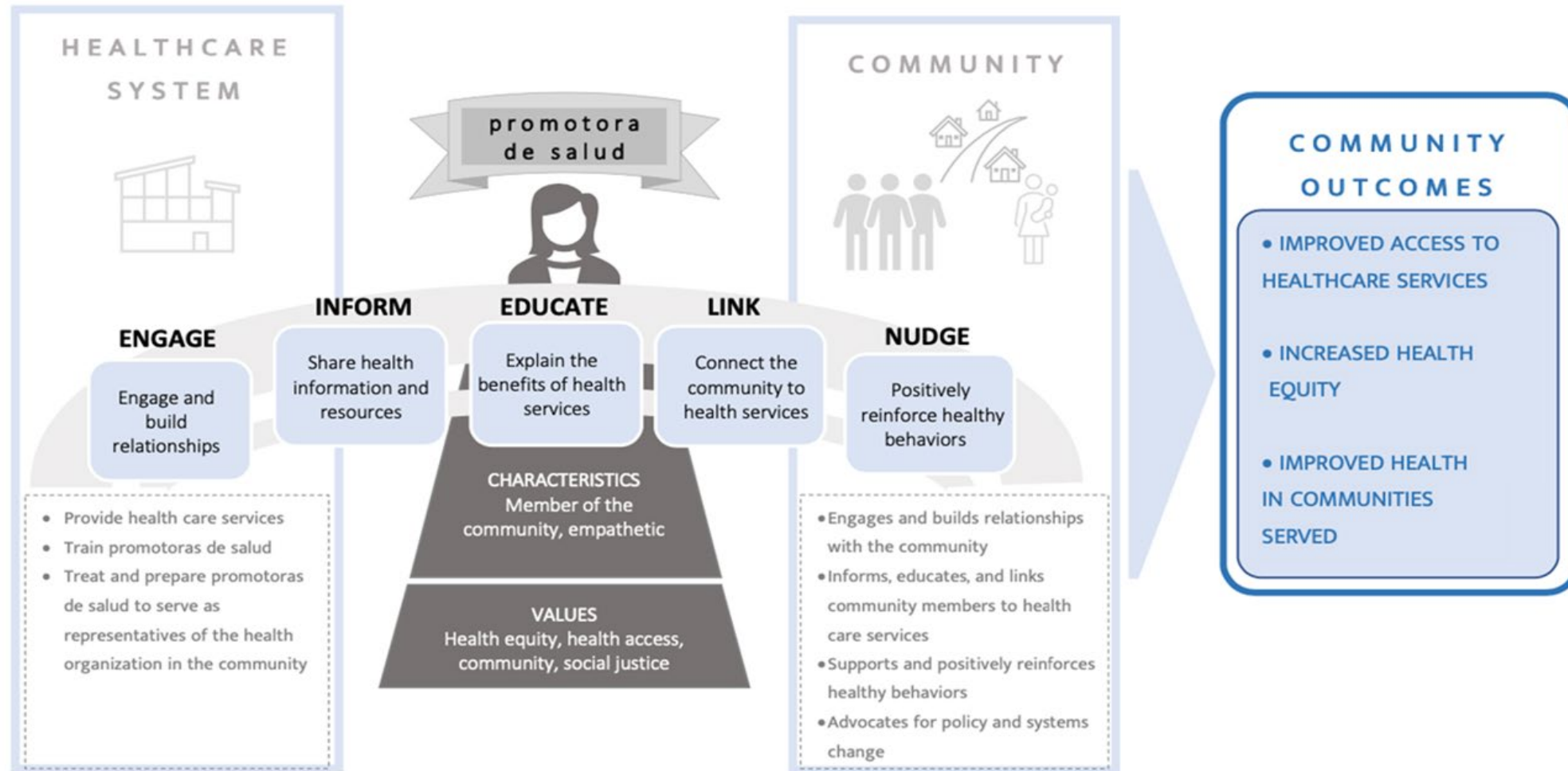
Who We Serve



Clínica Romero hosts 6 clinics located in Los Angeles County Service Planning Area 2, 4, & 7 (SPA 2, 4, & 7) and predominantly serves the low-income, monolingual Spanish-speaking, uninsured Latino population. Most of our patients (99%) live at or below 200% of the Federal Poverty Level and 84% live under 100% FPL.



Promotora Model



Grant Funded Projects



COVID-19 Outreach and Education

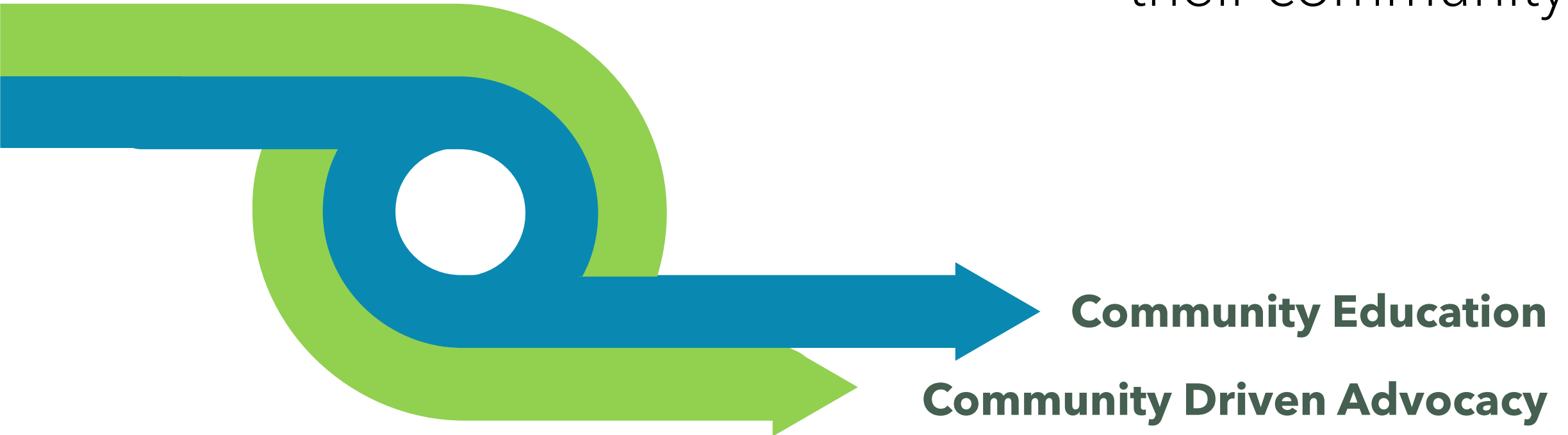
LA County Department of Public Health



Diabetes Prevention & Awareness

USC Good Neighbors Campaign

Promotoras are community members who know the social networks and strengths of their community



Promotoras in the Community



Promotoras in the Community



Promotoras in the Community



Promotoras in the Community



Variety of Outreach



Guided Discussion

FRONTIER
energy

Viridis
CONSULTING





Audience Q&A

THANK YOU!



13th Annual California Climate and Energy Forum