

2023 CALIFORNIA CLIMATE EQUITY COLLABORATIVE

# A CALL TO ACTION

## CLIMATE EQUITY THROUGH REGENERATIVE ECONOMICS

06/14/23

### CO-MODERATORS

- Anita Lopez | California Eco Network
- Yvette Mari Robles | Pathfinder Well Care

### PANELISTS

- Sister Maria A. Muhammad | I Am Green
- Tere Almaguer | Poder SF
- Dominic Allamano | Urban Agroforester
- Fatima Malik | Del Paso Heights Growers' Alliance

Presentation and workshop format prepared by Pathfinder Well Care in partnership on behalf of The California Eco-Network





# WELCOME

Thank you for joining us in our quest for economic justice, climate equity and the co-creation of a regenerative paradigm grounded in environmental stewardship that honors our communities and uplifts collective lived experiences.

# AGENDA

<b>1:15- 1:30 PM</b>	<b>1:30- 1:35 PM</b>	<b>1:35- 1:40PM</b>	<b>1:40- 2:00PM</b>	<b>2:00- 2:20PM</b>	<b>2:20- 2:30PM</b>
<b>OPENING</b>	<b>ABOUT US</b>	<b>SETTING</b>	<b>OUR WORK</b>	<b>CALL TO ACTION</b>	<b>CLOSING</b>
OPENING CIRCLE	INTRODUCTIONS	PRINCIPLES OF REGENERATIVE ECONOMICS	CASE STUDIES OF REGENERATIVE ECONOMICS IN ACTION	BREAK OUT GROUPS	CLOSING CIRCLE



# COMMUNITY AGREEMENTS



Photo Source: Yvette Mari Robles, Pathfinder Well Care

- Seek intentional learning - to listen, pause, discuss, share, and be vulnerable.
- Lean into discomfort.
- Respect that everyone has their own experiences and they don't have to or need to mirror your own.
- Embrace dualism. We may hold the values of equity and justice and simultaneously be participating in systems that uphold oppression.
- Every voice is important. Commit to hearing your own needs and the needs of others without judgement.
- Self-care - access your needs in order to be present.

Adapted from: *Pathfinder Well Care STEAMM JEDI Coaching Series*



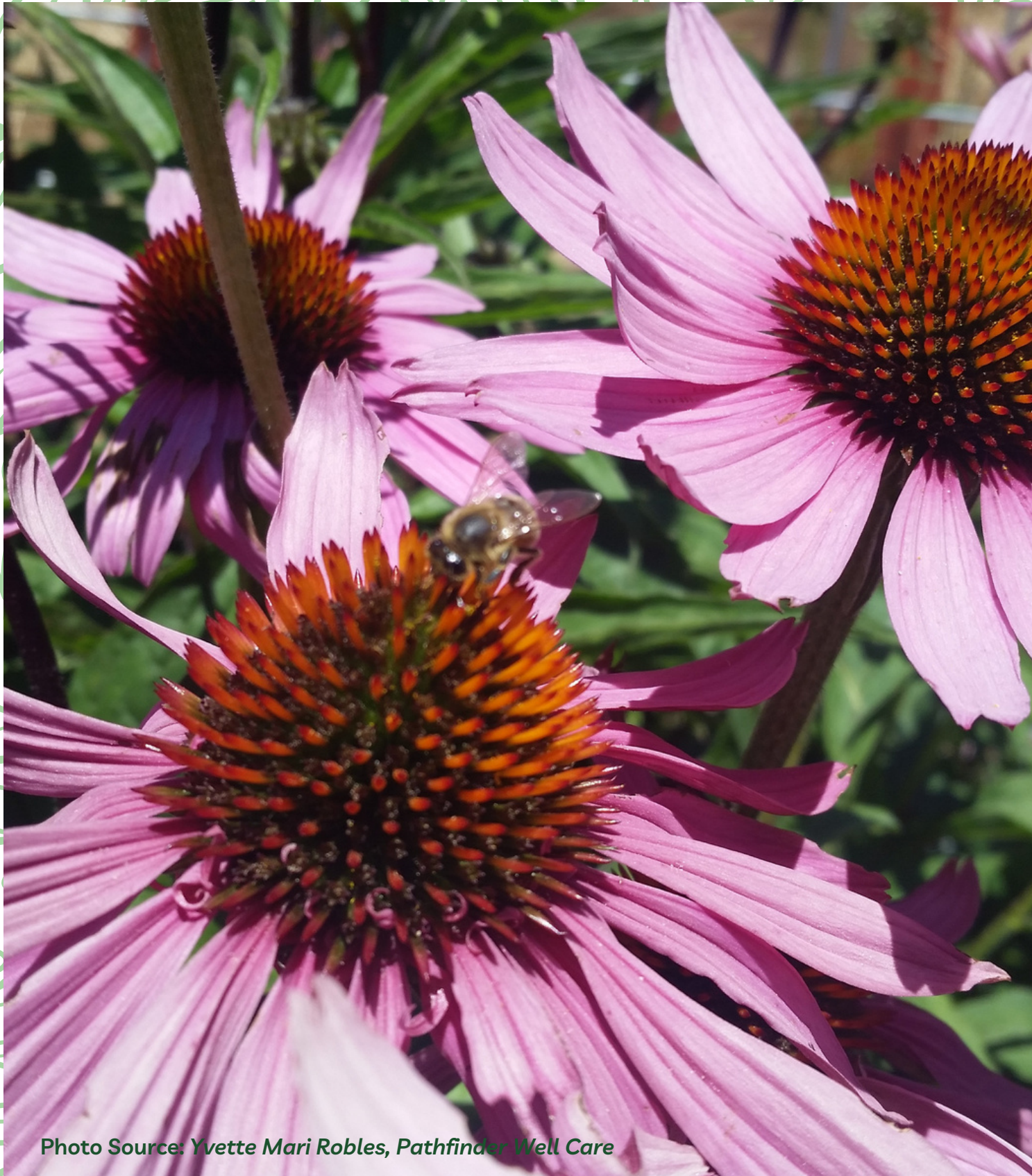


Photo Source: Yvette Mari Robles, Pathfinder Well Care

# LAND REFLECTION

We acknowledge that we are on the unceded ancestral homelands of the Southern Pomo First Nation, who are the original inhabitants of Sanoma County. As the indigenous stewards of these lands and in accordance with their traditions, the Southern Pomo have never ceded, lost nor forgotten their responsibilities as the caretakers of these places, as well as for all peoples who reside in their traditional territories.

As guests, we recognize that we benefit from living and working on their traditional homelands. We wish to pay our respects by acknowledging the Ancestors, Elders and Relatives of the Southern Pomo Nation by affirming their sovereign rights as First Peoples.

Adapted from: *San Francisco Human Rights Commission, November 12, 2020*





**ANITA LOPEZ**

**CLIMATE EQUITY STRATEGIST**

Community Ambassador for Hope,  
Justice and Healing.



**DOMINIC ALLAMANO**

**URBAN AGROFORESTER**

Artisan Fruit Tree Pruner,  
Community Composter, Youth  
Mentor, Complex Systems Nerd, and  
Steward of the Urban Food Forest.



**FATIMA MALIK**

**FOUNDER + CEO**

Earth Steward growing food and  
planting trees at Del Paso Heights  
Growers' Alliance.

## MEET OUR TEAM





**SISTER MARIA**

Eco-Steward. Eco-Village Developer.  
Community Servant.



**TERE**

**ENVIRONMENTAL JUSTICE COMMUNITY ORGANIZER**

Environmental Justice and Community  
Organizer with PODER in Yelamu, San  
Francisco, occupied Ramaytush Ohlone  
Land. Land Steward at Hummingbird  
farm.



**YVETTE MARI ROBLES**

**CURANDERA, COACH AND CONSULTANT**

Earth-centered community  
empowerment, mutual aid, health  
and healing justice.

**MEET OUR TEAM**



# WHAT IS CLIMATE ADAPTATION?

Climate change adaptation means **taking action to prepare** for and adjust to BOTH the current and projected impacts of climate change.

*-United Nations*

**Action Words: Prepare + Adjust + Project + Build Resilience**

“ One of the great rewards of being an activist is that you get to meet all these wonderful people. And there are many unsung heroes. ”

*-Dolores Huerta*



# WHAT IS CLIMATE EQUITY?

- Climate equity ensures the **just distribution** and benefits of climate protection efforts and **ALLEVIATES unequal burden created** by climate change.

*-Louisiana Climate Initiatives Task Force*

**Action Words: Distribute justice + Protect + Alleviate + Create**

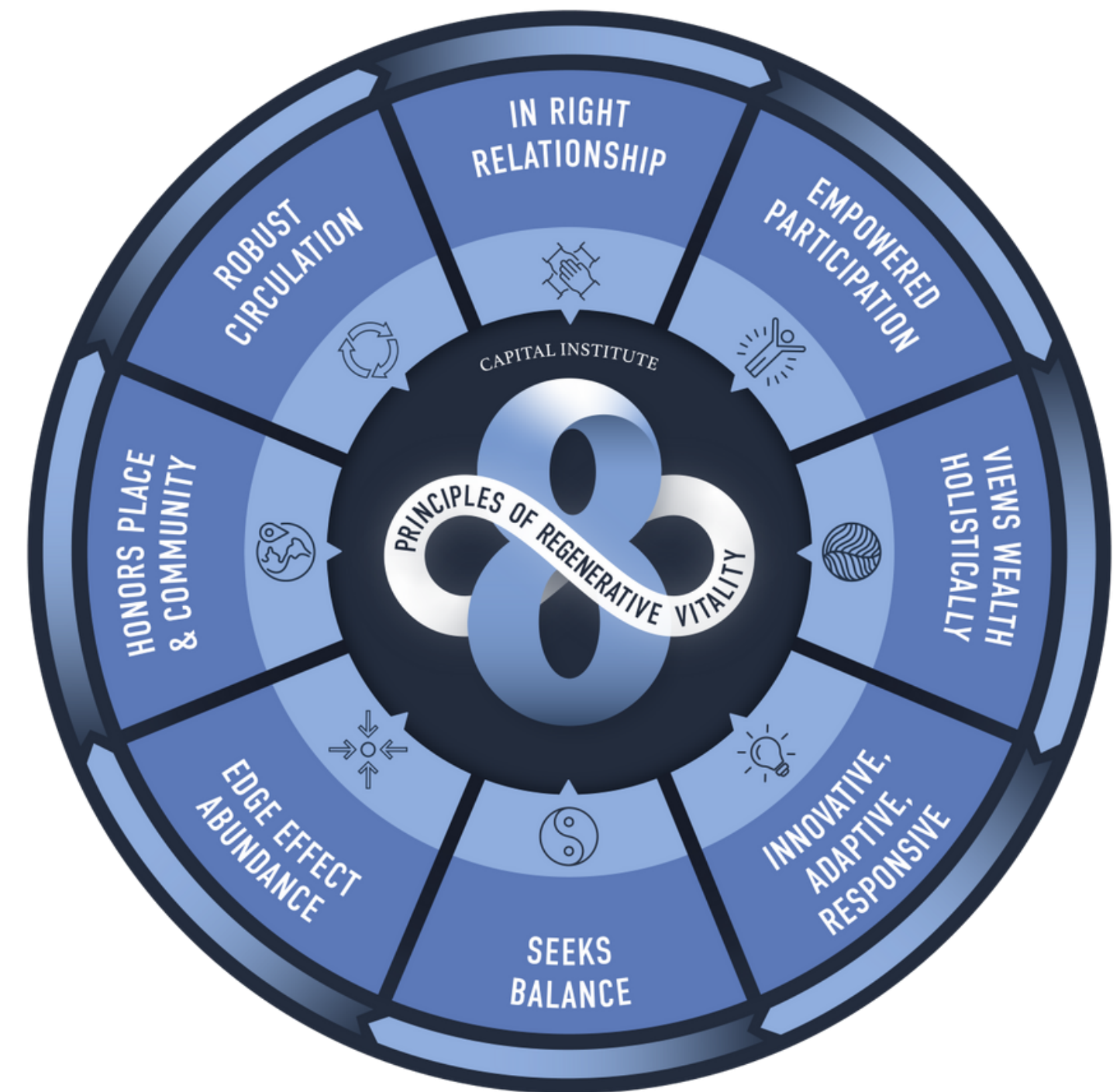
“Constructing a visionary economy for life calls for strategies that democratize, decentralize, decolonize, and diversify economies and energy.”

*-Energy Democracy: Advancing Equity in Clean Energy Solutions*



# WHAT IS REGENERATIVE ECONOMICS?

An economy that enriches, restores, and regenerates the Earth's biosphere at scale—while reversing climate change.



Source: *The Capital Institute*





Photo Source: Yvette Mari Robles, Pathfinder Well Care

# PRINCIPLES OF REGENERATIVE ECONOMICS

## **ROBUST CIRCULATION**

A living economy depends upon circulation of nutrients, energy, and materials where waste provides nutrients for systems, materials, empathy, trust, and healthy dialogue.

## **EMPOWERED PARTICIPATION**

Community identifies their own needs and enables them to contribute towards the health and well-being. Empowered participation is a non-negotiable quality of economic health.

## **HONORS PLACE & COMMUNITY**

Honor each human community for its people, traditions, beliefs that are shaped by history, traditions, and changing needs.

## **VIEWS WEALTH HOLISTICALLY**

True wealth can be seen holistically and include spiritual, cultural, and relational capital. GDP growth is not the only metric.



# REGENERATIVE ECONOMICS IN ACTION

## 1. I AM GREEN

Community EV Car Share

## 2. URBAN AGRO FORESTER

Regenerative Community Projects

## 3. PODER SF

Community Stewarding Public  
Land for Healing by Reclaiming  
our Local Economies

## 4. DEL PASO HEIGHTS GROWERS ALLIANCE

Public Land Management and Food  
Sovereignty







Photo Source: Yvette Mari Robles, Pathfinder Well Care

# CLOSING CIRCLE

- Report back call to actions
- Post the Call to Actions on Civic Well  
Website + LinkedIn
- Appreciation + closing prayer for Mother  
Earth



# CALL TO ACTION

## BREAK OUT GROUPS

1 + 2

HOW COULD OR DO YOU IMPLEMENT CLIMATE EQUITY IN YOUR WORK AS IT RELATES TO REGENERATIVE ECONOMICS ?

WHAT SHOULD FUNDERS BE THINKING ABOUT AND PRIORITIZING TO ENACT CLIMATE EQUITY WORK IN AN INCLUSIVE AND HOLISTIC MANNER?

### Ensure Equitable Flow of Resources

- Prioritize communities who have less resources (hard to reach) regardless of Energy Savings
- Shape resources of affluent cities in connection with whole county needs (Budgets)
- Include in budgets to cover costs of roof upgrades for solar installations when needed
- Go a step further to do more Energy Efficiency programs

### System Changes are Still Needed

- Increase funding support for Tribal organizations
- Address power and ownership of public lands through land back initiative
- Costs of negative externalities are not included in planning processes





# CALL TO ACTION

## BREAK OUT GROUPS **1**

**HOW COULD OR DO YOU IMPLEMENT CLIMATE EQUITY IN YOUR WORK AS IT RELATES TO REGENERATIVE ECONOMICS ?**

### **Community Engagement Processes**

- Listen!
- Offer listening Sessions with multi-Family + unsubsidized affordable housing communities
- Compensate for contributions and expertise
- Implement feedback avenues with community leaders
- Offer hyperlocal solutions

### **Workforce Development + Capacity Building**

- Hire Locally
- Seek Local Government partnerships with community organizations
- Training opportunities that explain technical processes, vocabulary, and equipment
- Identify an install EV charging stations stations are needed the most for equitable access
- Maximize opportunities to implement EV and Electrician career pathways (Youth Learn, GRID Alternatives, Climate Ambassadors)



# CALL TO ACTION

## BREAK OUT GROUP 2

**WHAT SHOULD FUNDERS BE THINKING ABOUT AND PRIORITIZING TO ENACT CLIMATE EQUITY WORK IN AN INCLUSIVE AND HOLISTIC MANNER?**

### **Funding Limitations**

- Competitive and narrow scope funding opportunities limits potential impact in low resourced communities
- More holistic planning and flexibility for funding is needed
- Can make partnerships between CBO's and government challenging
- Shift philanthropic away from scarcity model toward abundance mindset
- Contracting & procurement guidelines for local governments can prevent equitable distribution of funding to small business, grassroots organizations, or community groups
- Promote Participatory Grant Making Processes to promote community ownership and inclusivity

### **RFP Guideline Recommendations**

- Percentage of funding stays within the community it is intended to serve (e.g. 75%)
- Equitable pay for GR and Non profits that matching corporate and private industry
- Consider “Term Limits” for organizations who historically receive funding to allow for more equitable distribution





# CONTACT US



Yvette Mari Robles | [yvette@pathfinderwellcare.org](mailto:yvette@pathfinderwellcare.org)



@urbancampesinx | [tere@podersf.org](mailto:tere@podersf.org)



@lamgreensd | [sistermaria@lamgreenandsoareyou.org](mailto:sistermaria@lamgreenandsoareyou.org)



@dphga\_95838 | [rootcellarcommunity@gmail.com](mailto:rootcellarcommunity@gmail.com)



@sacfoodforestry | [sacfoodforerstry@gmail.com](mailto:sacfoodforerstry@gmail.com)



Anita M. López | [soylopezconsulting@gmail.com](mailto:soylopezconsulting@gmail.com)



*Photo Source: Yvette Mari Robles, Pathfinder Well Care*





## RESOURCES FOR FURTHER ACTION



***A People's Orientation to a Regenerative Economy***  
***The Climate Justice Alliance***

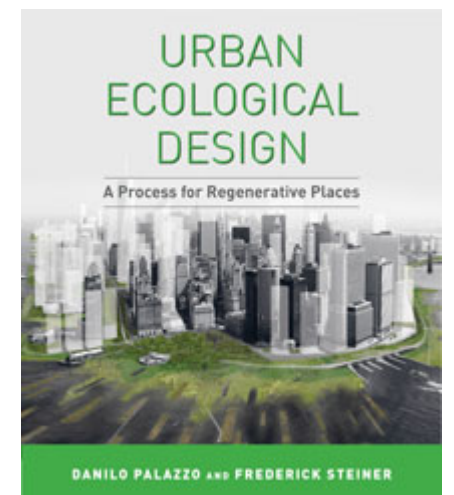
***Regenerative Economy: Moving from Theory to Action***  
***Circle Economy***

***Catalyzing the Regenerative Economy***  
***Southface Institute***

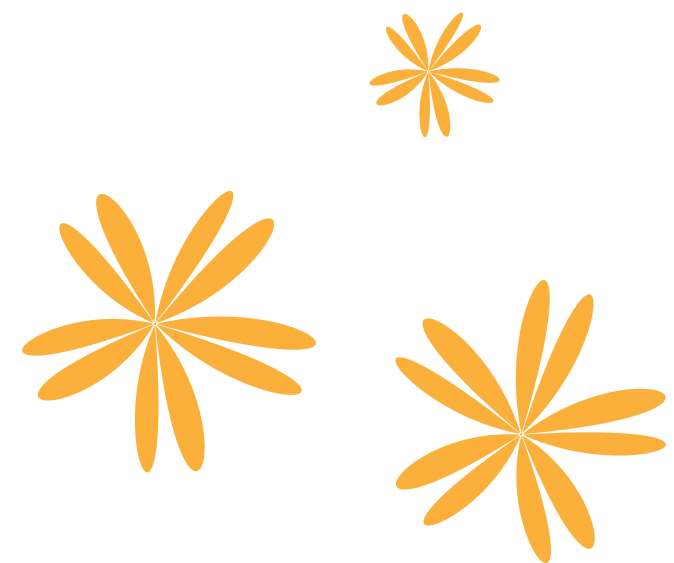


***Energy Democracy: Advancing Equity Solutions in Clean Energy Solutions***  
***Island Press***

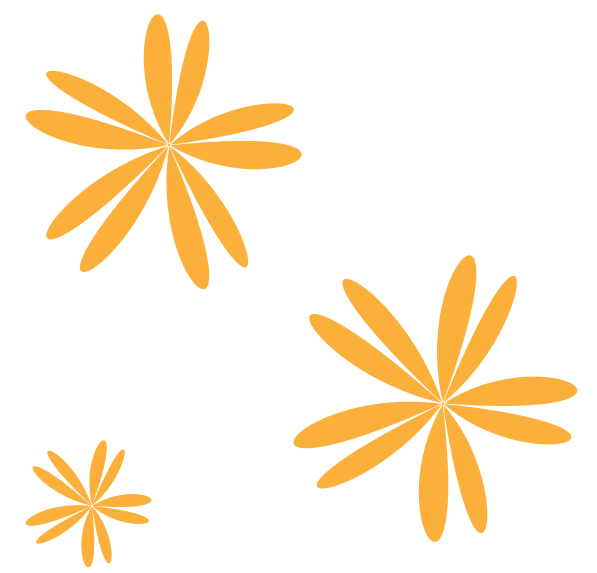
***Urban Ecological Design: A Process for Regenerative Design***  
***Island Press***







THANK YOU FOR  
YOUR TIME AND  
PARTICIPATION!



# Dominic Allamano – Urban Agroforester

Sacramento Food Forestry

A large, dark blue, diagonal shape that starts from the bottom left corner and extends towards the top right corner, covering the lower half of the slide.



# Background



## 2011 - 2017 Soil Born Farms Edible City Coordinator

- Harvest Sacramento - Community scale fruit gleaning, garden building and fruit/shade tree planting programs within Sacramento Building Healthy Communities and Farm to Every Fork

## 2017 - 2023 - Independent Urban Agroforester

- Fruit tree and soil health services, consulting and education/mentoring for residents, schools, churches and community organizations around Sacramento region

## 2023 onward - Community Compost Network in Sacramento

- Cal Recycle Community Compost for Green Spaces grant

# Regenerative Economic and Climate Equity & Justice



- Mutually beneficial relationships and enhanced ecosystem functions
- Wide Boundary, long term focus for neighborhood scale work.
- Connect people to each other, the land they share, and themselves and a beneficial part of the whole.
- Examples
  - Harvest Sacramento
  - Sacramento Food Forestry
  - Mirasol Village Community Garden



# Key Considerations for Funders, Policy Makers & Power Holders



- Wide boundary long term analysis and action
- Turn nonrenewal energy and \$ into placed based multicapital complexes
- Enhancement of Ecosystem functions and services
- Scaffolding for cultural evolution and ecosystem succession into synergy
- Prepare communities to not be ready for the future that is coming. Enhance hyper local options and capacity for response.

# Dominic Allamano

[Sacfoodforestry@gmail.com](mailto:Sacfoodforestry@gmail.com)

@SacFoodForestry on Instagram

