



Making Equity Real in Climate Mapping Tools and Platforms

6/13/23

Our Vision

The Greenlining Institute works towards a future where communities of color can build wealth, live in healthy places filled with economic opportunity, and are ready to meet the challenges posed by climate change.



Agenda

- Introductions
- Overview of Climate Mapping Tools
- Making Equity Real Framework
- Activity
- Wrap-up



Introductions

- Names
- Pronouns
- Organization
- Why is this topic interesting to you?



Agenda

- Introductions
- Overview of Climate Mapping Tools
- Making Equity Real Framework
- Activity
- Wrap-up





1937
Oakland Redlining Map



2021
CalEnviroScreen



May 17, 2021
Oakland COVID-19 Map

**ECONOMIC, ENVIRONMENTAL, AND HEALTH IMPACTS
BASED ON RACE**

Source: Alvaro Sanchez

What are mapping tools and how are they used?



Establish eligibility for public funding



Inform research on health, environmental, and socioeconomic factors



Aid community engagement processes

There are many mapping tools across various scales and geographies



Climate and Economic Justice
Screening Tool



CalEnviroScreen

Vulnerable Communities Platform

- Energy Justice Dashboard (Dept. of Energy)
- Transportation Disadvantaged Census Tracts (Dept. of Transportation)
- Social Vulnerability Index (Center for Disease Control)
- EJ Screen (Environmental Protection Agency)

Federal

- [Environmental Policy Innovation Center Beta EJ Tools Map](#)
- MDE EJ Screening Tool (Maryland)
- Colorado EnviroScreen (Colorado)
- MiEJScreen Environmental Justice Screening Tool (Michigan)
- Illinois EPA EJScreen (Illinois)

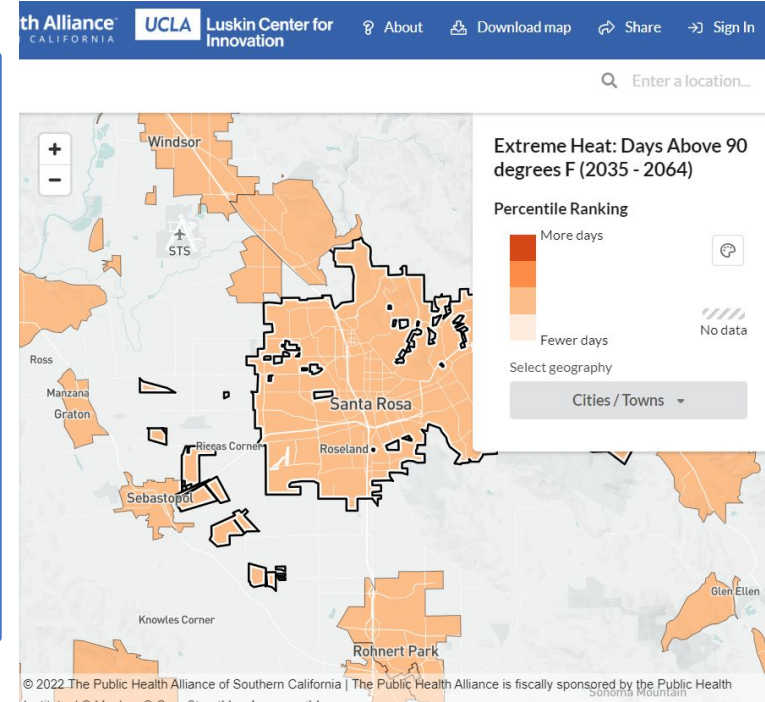
State

- Resilience Hotspots (Greenbelt Alliance)
- LA County Climate Vulnerability Assessment (LA Chief Sustainability Office)
- Cal-Adapt (UC Berkeley, Energy Commission, Strategic Growth Council)

Regional and Local

Gaps in the Mapping Landscape

- According to APEN's report Mapping Resilience
 - 42 frameworks addressing climate vulnerability
 - 4 include multiple climate exposures, population sensitivity, and adaptive capacity



Agenda

- Introductions
- Overview of Climate Mapping Tools
- Making Equity Real Framework
- Recommendations
- Activity
- Wrap-up



How do we make equity real?

01

GOALS, VALUES, MISSION

How is equity described in the context of the overall goal of the policy, program or funding approach? Is equity a core component? Is it missing?

02

PROCESS

How does the policy, program or funding approach propose to deliver outcomes with equity as a focus? How are decisions made or influenced by communities with less political power or voice?

03

IMPLEMENTATION

How does implementation lead to equity outcomes? What are the explicit equity outcomes described in the policy, program or funding approach?

04

ANALYSIS, MEASUREMENT

How is equity progress measured? How do we know that equity goals were achieved?

Summary of Recommendations

01

GOALS, VALUES, MISSION

- Coordinate local, state, and federal tools
- Ensure transparency and accountability

02

PROCESS

- Partner with frontline communities to design and implement the tool
- Provide technical assistance and capacity building

03

IMPLEMENTATION

- Address data gaps
- Include cumulative impacts

04

ANALYSIS, MEASUREMENT

- Incorporate community ground-truthing
- Measure outcomes of how funding was allocated - maps are only tools, the outcomes are what really count!

Live Poll

How do you engage with mapping in your work?



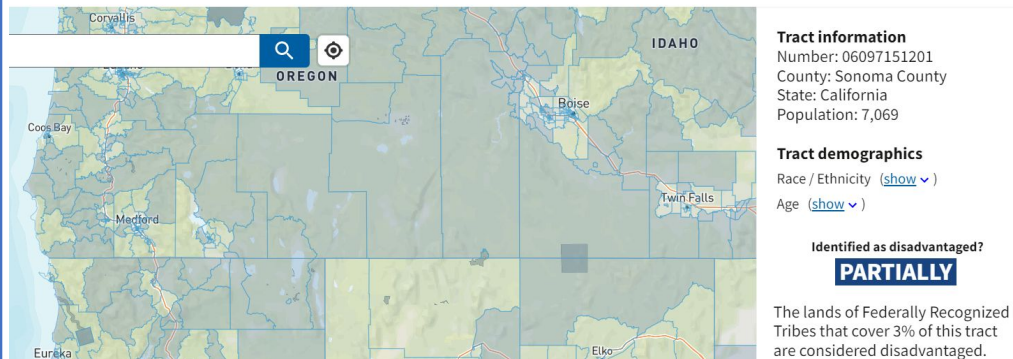
Example 1: Climate and Economic Justice Screening Tool

Purpose:

- Identify disadvantaged communities for J40 investments

Criteria:

- Based on 32 metrics in 8 categories
- Income one of the most important factors



Example 1: Climate and Economic Justice Screening Tool

01

GOALS, VALUES, MISSION

Clearly defined goal

Provide more clarity about coordination across federal tools

02

PROCESS

Worked with EJ advisory committee

Eliminate barriers to access and engagement

03

IMPLEMENTATION

Added data on climate vulnerability

Include cumulative impacts and proxy analysis for race

04

ANALYSIS, MEASUREMENT

Option for census tract level feedback

Timeline for upcoming iterations is unclear



Example 2: CalEnviroScreen

Purpose:

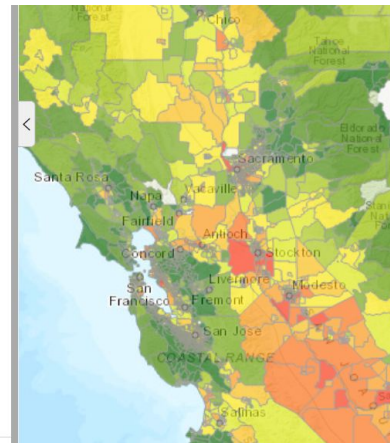
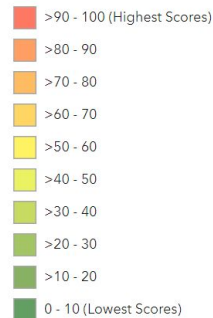
- Identify disadvantaged communities for CalEPA and other California state agency funding programs

Criteria:

- Based on 21 metrics in 4 categories
- Includes cumulative impacts

Overall Percentile

CalEnviroScreen 4.0 Results



Example 2: CalEnviroScreen

01

GOALS, VALUES, MISSION

Rooted in passage of SB 535, equity focused bill

Could have specified more guidelines for an equitable process

02

PROCESS

Several workshops across state for initial tool design

Lack of transparency in process for iterations

03

IMPLEMENTATION

Inclusion of qualitative information / groundtruthing

Threshold is at discretion of CalEPA without a clear process

04

ANALYSIS, MEASUREMENT

Analysis on correlation with race

Deeper analysis of success of tool



Example 3: Vulnerable Communities Mapping Platform

Purpose:

- Identify communities most vulnerable to the impacts of climate change

Criteria:

- Combination of climate and social / economic data
- Capture regional variation and community input

Vulnerable Communities Platform

Guided by the ICARP TAC definition and strong research and advocacy from a host of environmental justice and equity organizations, OPR is currently developing a Vulnerable Communities platform in partnership with a wide range of stakeholders focused on frontline communities. This platform will serve as an open, accessible, and community-grounded resource to deliver information and data to help decisionmakers understand and visualize underlying factors that drive vulnerability and future risk to climate impacts.

Example 3: Vulnerable Communities Mapping Platform

01

GOALS, VALUES, MISSION

Community-grounded platform; identifies vulnerable communities

N/A

02

PROCESS

Iteratively seeks feedback from community-led working group

Break down highly technical topics when soliciting feedback

03

IMPLEMENTATION

Still in progress

Still in progress

04

ANALYSIS, MEASUREMENT

To be determined

To be determined



Summary of Recommendations

01

GOALS, VALUES, MISSION

- Coordinate local, state, and federal tools
- Ensure transparency and accountability

02

PROCESS

- Partner with frontline communities to design and implement the tool
- Provide technical assistance and capacity building

03

IMPLEMENTATION

- Address data gaps
- Include cumulative impacts

04

ANALYSIS, MEASUREMENT

- Incorporate community groundtruthing
- Measure outcomes of how funding was allocated

Agenda

- Introductions
- Overview of Climate Mapping Tools
- Making Equity Real Framework
- Activity
- Wrap-up



Discussion Instructions

- Choose from 4 topics
- Move to your preferred corner of the room
- Take 5 minutes to write reflections on the question
- Discuss for 15 minutes with your group
- Synthesize and be ready to report back to the large group

1. Developing and Designing Tools

2. Implementing and Applying Tools

3. Shaping Mapping Tools via Advocacy and Community Engagement

4. Building Awareness of Mapping Tools

Agenda

- Introductions
- Overview of Climate Mapping Tools
- Making Equity Real Framework
- Activity
- **Wrap-up**

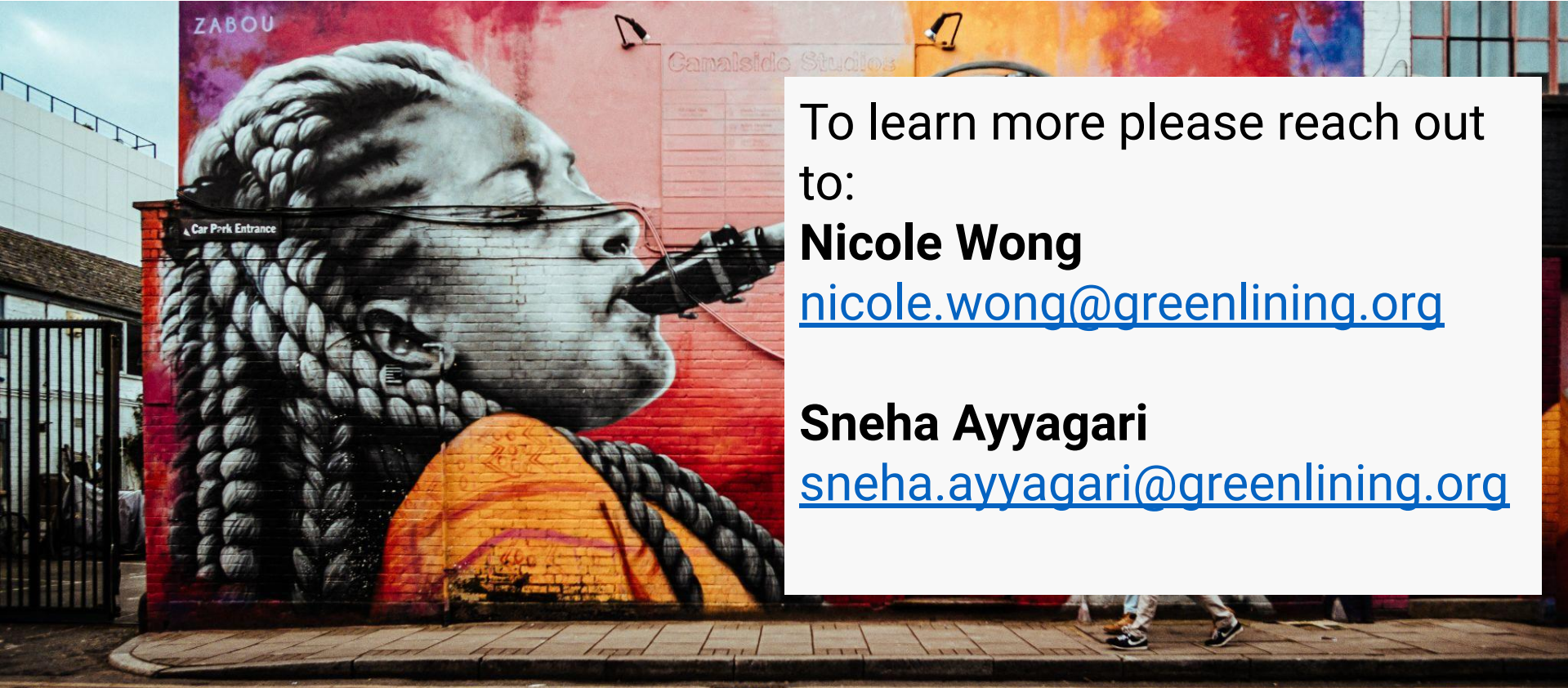


Wrap-up

- What are some of the major takeaways from your discussion?
- What is one thing that you will follow up on as a result of this discussion?



Thank You



To learn more please reach out to:

Nicole Wong

nicole.wong@greenlining.org

Sneha Ayyagari

sneha.ayyagari@greenlining.org



Appendix

6/13/23

What tools are used at the federal level?

Energy Justice Dashboard (BETA)

Office of Economic Impact and Diversity

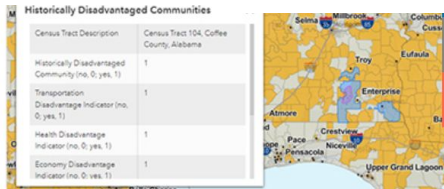
 **EJScreen** EPA's Environmental Justice Screening and Mapping Tool (Version 2.11)



Climate and Economic Justice
Screening Tool

CDC/ATSDR Social
Vulnerability Index

[Transportation Disadvantaged Census Tracts](#) is the most commonly used tool in USDOT discretionary grant programs to determine disadvantaged community status. The tool allows the mapping of project areas to determine level of disadvantage according to DOT's Justice40 definition.



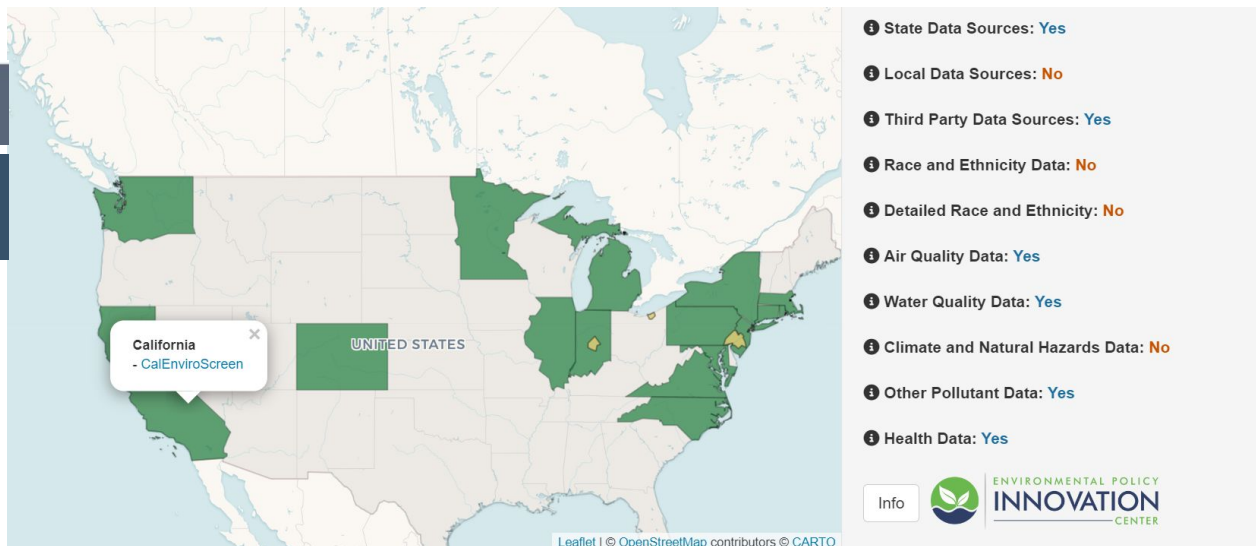
What tools are used at the state level?



Washington Tracking Network
A Source for Environmental Public Health Data



MiEJScreen:
Environmental Justice
Screening Tool (DRAFT)



[Environmental Policy Innovation Center Beta EJ Tools Map](#)



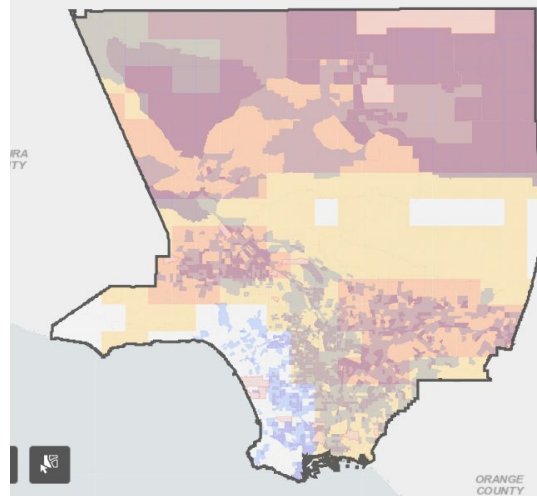
What tools are used at the local or regional level?

Resilience Hotspots (Greenbelt Alliance)



LA County Climate Vulnerability Assessment (LA Chief Sustainability Office)

Los Angeles County Climate Vulnerability Assessment - Web tool

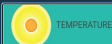


Cal-Adapt (UC Berkeley, Energy Commission, Strategic Growth Council)

SELECT A NEW LOCATION

GENERATE REPORT

Local Climate Change Snapshot for
Sonoma
California, United States



TEMPERATURE



PRECIPITATION



WILDFIRE

Healthy Places Index

Uses 25 indicators to visualize the factors influencing health and resilience

