



Organize, Fund, Act – Sonoma County Government Collaboration for Climate Solutions

Suzanne Smith, Executive Director

Sonoma County Regional Climate Protection Authority

Tasha Wright, Energy and Sustainability Coordinator
Santa Rosa Water

Eris Weaver, Executive Director

Sonoma County Bicycle Coalition

presenting at

California Climate and Energy Forum

Santa Rosa, CA

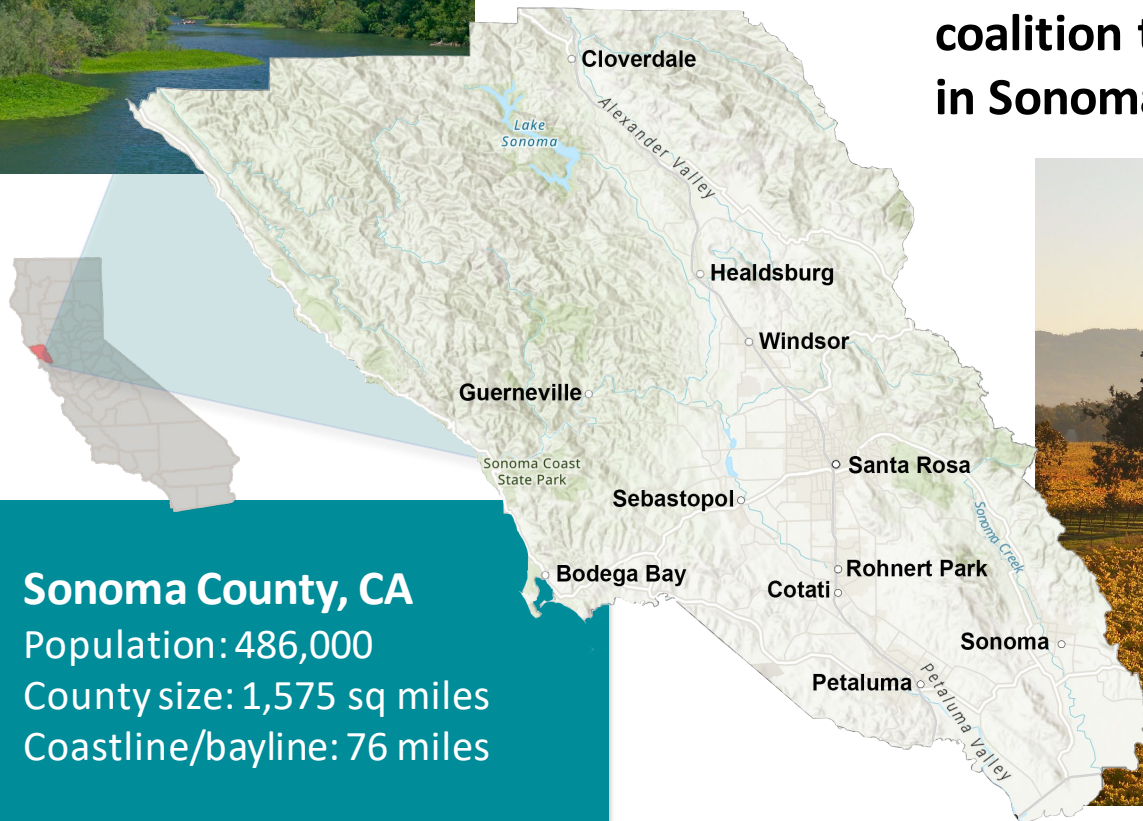
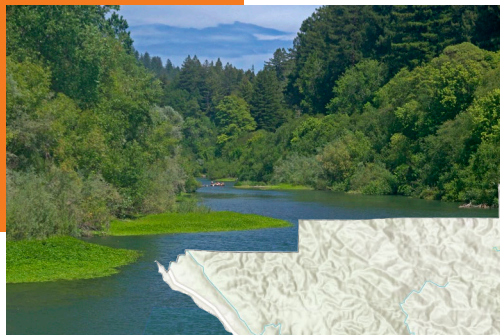
June 14, 2023



Suzanne Smith

Sonoma County Regional
Climate Protection Authority

Mission: RCPA leads a local government coalition to mobilize climate action in Sonoma County



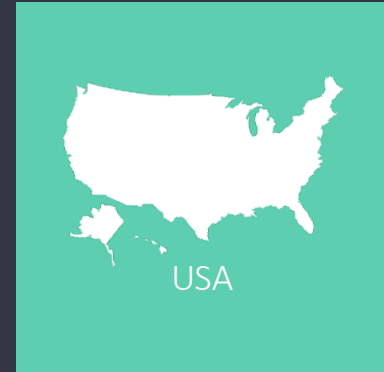
Sonoma County, CA

Population: 486,000

County size: 1,575 sq miles

Coastline/bayline: 76 miles





RCPA Accomplishments

RCPA
Created

Climate Action
2020 and Beyond

Climate Emergency
Resolutions

Climate Protection
Initiative

Carbon
Neutral
By 2030

2009

2013

2016

2017

2018

2019

2020

2021

2022

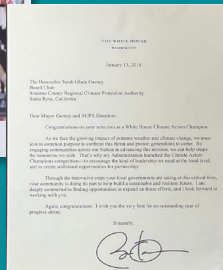
2023

BayREN

SHIFT Sonoma

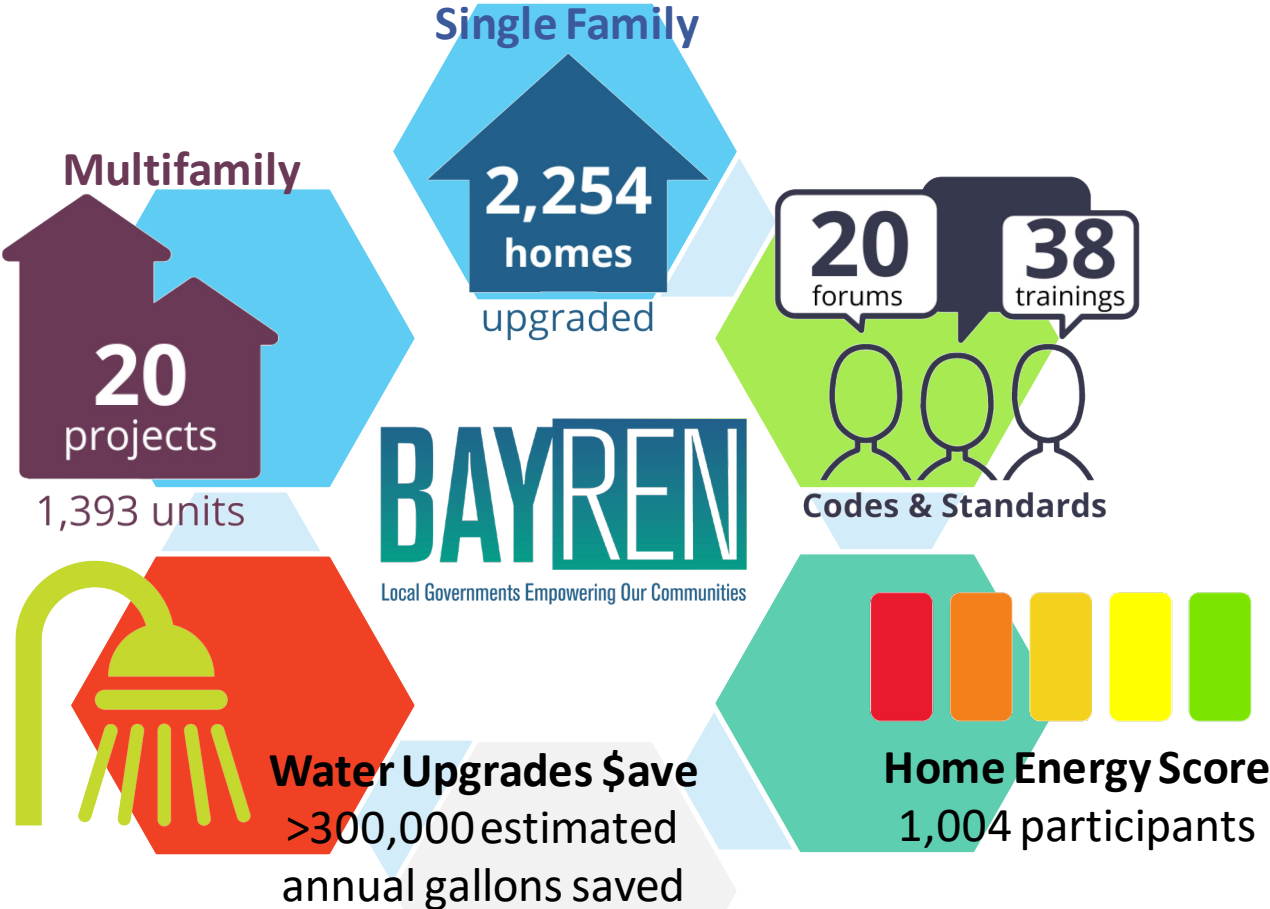
Sonoma Climate
Mobilization
Strategy

Recognized as a
White House
Climate Action
Champion in 2014



**SONOMA CLIMATE
MOBILIZATION**
RESILIENT · EQUITABLE · TRANSFORMATIVE

BayREN Sonoma County Impacts to Date





**SONOMA CLIMATE
MOBILIZATION**
RESILIENT · EQUITABLE · TRANSFORMATIVE

Initiative	Strategy
Transportation	<ul style="list-style-type: none">• Drive Less Sonoma County Campaign• EV Access for All Partnership• Sonoma County Vehicle Miles Traveled Mitigation Bank
Buildings	<ul style="list-style-type: none">• All-Electric Buildings Campaign• Carbon-Free Electricity
Land and Water	<ul style="list-style-type: none">• Protect Existing Carbon Stocks• Increase Carbon Stocks• Scale Up Infrastructure for Sequestration
Environmental Justice and Community Engagement	

Climate Resilience District (CRD)

Authorizes local agencies to form a special district to deal with climate adaptation and mitigation.

- Parcel tax
- Sales tax
- Tax increment financing
- Benefit assessments
- Service charges
- Gifts, fees, and grants from public and private entities
- Ability to issue revenue and GO bonds
- No eminent domain authority

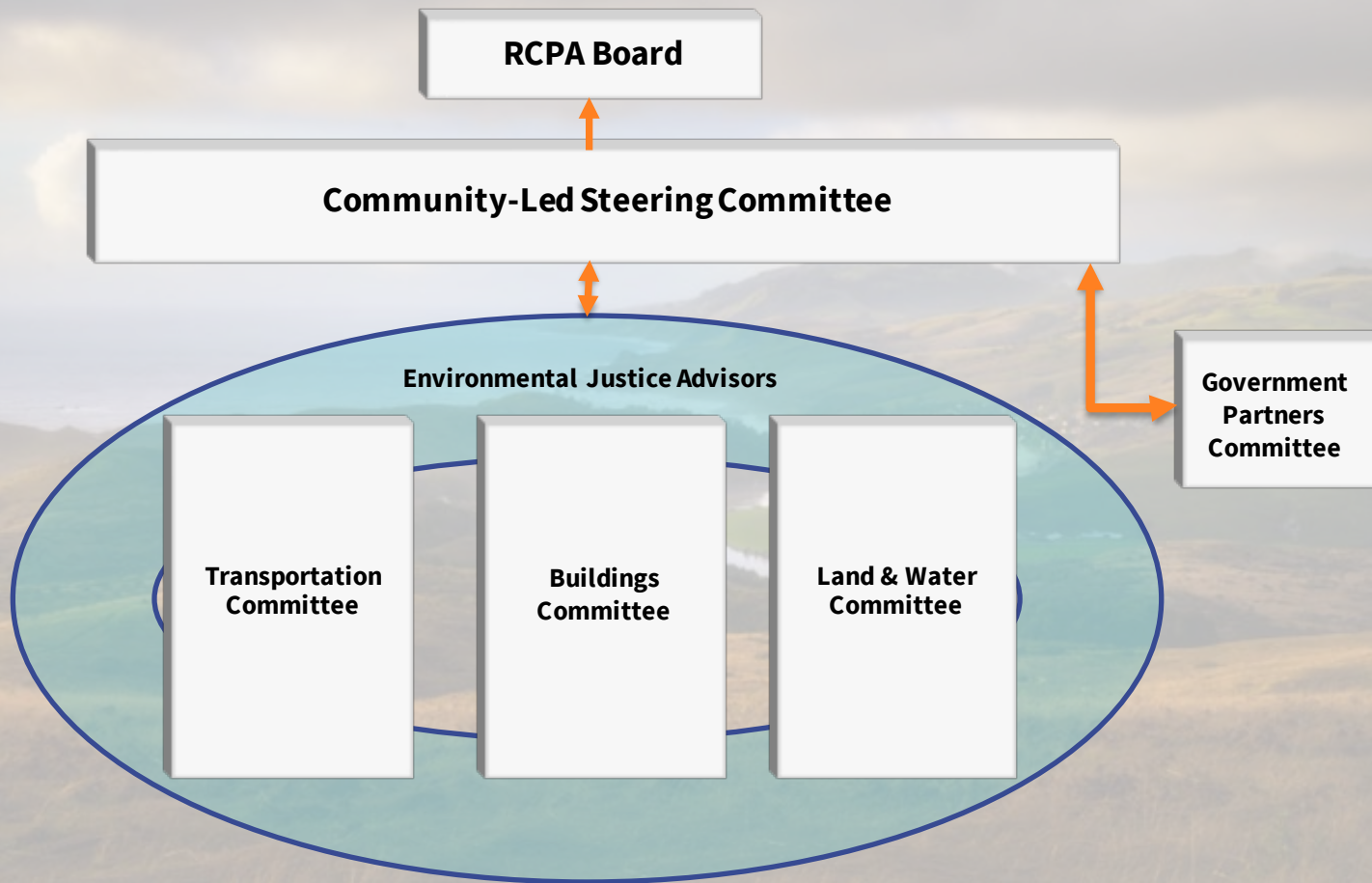


Climate Protection Initiative (CPI)

Establish stable, reliable local funds to address climate change

- Ad Hoc Committee was created by RCPA Board in 2021
- Explore options for a possible climate revenue measure in 2024
- Three focus areas derived from our Climate Mobilization Strategy:
 - Transportation
 - Buildings
 - Land and Water
- Polling
- Community engagement
- Expenditure plan development

CLIMATE PROTECTION INITIATIVE COMMITTEE STRUCTURE





Tasha Wright

City of Santa Rosa



Eris Weaver

Sonoma County Bicycle Coalition



Thank you!