



# Santa Ana Watershed Project Authority Water-Energy Community Action Network



Led by SAWPA, WECAN is a water and energy savings program offered to residents in the Santa Ana River Watershed for NO COST.

Residents can choose one or both of two major water and energy savings projects:

## LAWN REPLACEMENT

If the only person walking on the grass is the person mowing it, it's time to do something new.

## APPLIANCE REPLACEMENT

The cheapest energy and water is the energy and water you don't use in the first place.

### The Reasons

#### Save Water!

- People often give their already water-intensive turf grass 2x too much water.
  - Water runoff filled with pesticides and fertilizers that keep lawns green is the #1 source of water pollution.
- Climate-appropriate landscapes will thrive off of just rainwater and attract birds, bees, and our eyes!

#### Save Energy and Water!

- Installations like water heater blankets can reduce heat loss by up to 45%.
  - Replacing old toilets and fixtures can reduce the amount of water a family uses by 60%.
- Because of energy efficiency, California's per capita electricity consumption has remained nearly flat over the past 40 years!

### The Specs

Residents of designated communities can sign-up to have 750-1000 square feet of grass in their front yard replaced with California native and drought-resistant landscapes. Residents work with SAWPA's contractors to create a personalized landscape design all for NO COST.

Residents can choose to replace appliances and fixtures with new efficient versions for NO COST. Depending on the county of residence, this list includes:

- toilet replacements
- showerhead replacements
- water heater replacements
- faucet aerator installations

### The Numbers

**260,000 Square Feet**

of water-thirsty turf removed and replaced with drought-tolerant landscaping in

**4 Communities**

in the service areas of the 4 Partner Water Agencies in the Santa Ana River Watershed

**1700 Residences**

will have energy & water saving devices installed. These residences are located throughout the

**3 Counties**

of the Santa Ana River Watershed: Orange, Riverside, and San Bernardino

### Our Partners

#### 4 Water Agencies

- City of Anaheim\*
- Fontana Water Company
- Jurupa Community Services District
- West Valley Water District

#### 2 Contractors

- EcoTech
- Green Media

\*In Process of Finalizing Agreement

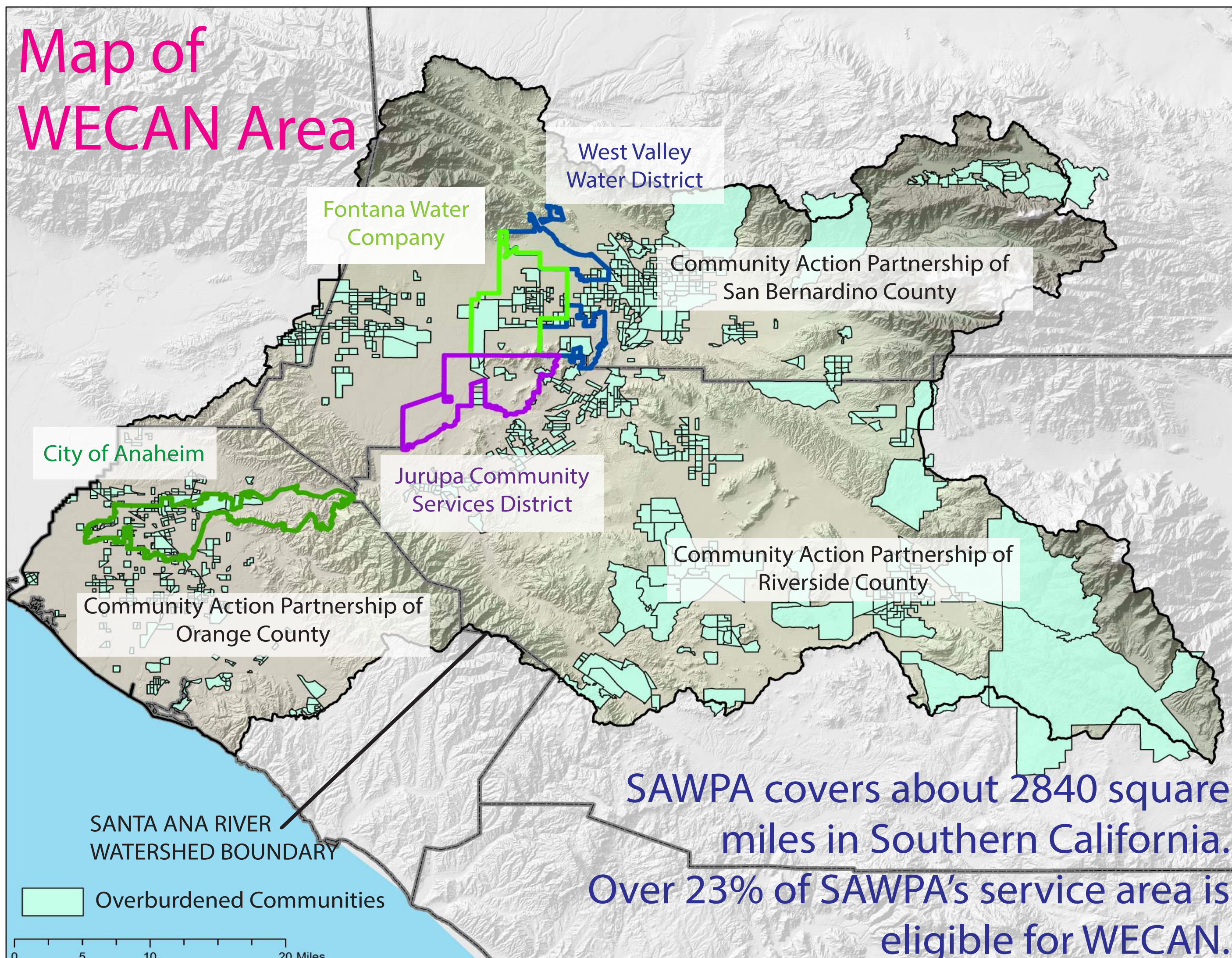
#### 3 CAPs

- Community Action Partnerships of
- Orange County
  - Riverside County
  - San Bernardino County

#### 2 Non-Profits

- Orange County Coastkeeper
- Inland Empire Waterkeeper

## Map of WECAN Area



19%  
30%  
No.1  
60%

About 19% of all the energy in California is used to move, treat, and heat water.

In Southern California, up to 30% of all household water is wasted from inefficient outdoor watering.

Turf grass is the number one crop by acre grown in the USA, yet is often purely ornamental and doesn't feed any people.

Residents can improve their water efficiency up to 60% by installing efficient appliances and by replacing turf lawns with native or drought-tolerant landscapes.

### Why SAWPA?

The Santa Ana Watershed Project Authority (SAWPA) provides planning, facilitation, and regional infrastructure management with the understanding that a healthier and more resilient Santa Ana River Watershed is made with the integration of different agencies and communities at every level.

With the Water-Energy Community Action Network (WECAN), SAWPA brings together agencies and communities to conserve water and energy in overburdened communities in the watershed at the individual level.

### Who Is Eligible?

This program is offered for no cost to residents who live in single family detached homes in the Santa Ana River Watershed that are in areas identified as overburdened by CalEnviroScreen 2.0. Residences must be in census tracts with a 76% or higher score to be eligible.

WECAN supports low-income communities to achieve water and energy savings. It is well documented that low-income communities are most vulnerable to climate change impacts, and though often already very efficient with resources, can also least afford adaptation to the changing conditions.

### How Is It Funded?

#### GRANT FUNDS

Up to \$2,339,823 from The Greenhouse Gas Reduction Fund via the Department of Water Resources.

#### PARTICIPATING AGENCIES:

\$130,000 from each of the participating water agencies for landscape work in their respective areas.

### The Annual Savings

**WATER** Enough water is saved to provide over 180 families of 4 for an entire year!

**23,692,716 gallons**

Gallons of water saved per year per program

Turf Replacement	11,400,000	Toilets	747,520
Shower Heads	6,570,000	Water Heaters	90,392
Thermostatic Shut-Off Valves	2,530,238	Water Heater Blankets	15,065
Faucet Aerators	2,299,500		

**ENERGY** Enough energy is saved to power over 438 residences for an entire year!

**2,957,567 kilowatt hours**

Kilowatt hours of energy saved per year per program

Shower Heads	1,538,939	Thermostatic Shut-Off Valves	231,917
Water Heaters	914,163	Water Heater Blankets	14,943
Faucet Aerators	257,605		

### Financial Partners\*



\*Only Confirmed Financial Partners are Shown