

# A TALE OF TWO CITIES

10th Annual SEEC Forum

June 27, 2019





the **Energy**  
Coalition



SAMANTHA MEZA  
Project Manager



JAKE ANDERSON  
Project Manager

MODERATORS



**POINTS OF  
DISCUSSION**

Panel Introductions

LGP Overview

City Introduction

Panel Discussion

Q&A





ROBYN EASON

West Hollywood  
Senior Sustainability Planner



JOSH SOLIZ

Orange  
Public Works  
Administrative Manager



SCOT MANN

Southern California Edison  
Program Manager



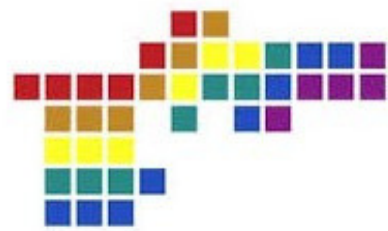
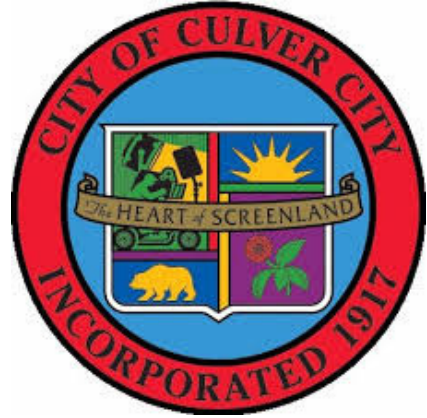
# LOCAL GOVERNMENT PARTNERSHIPS

- COLLABORATIONS BETWEEN UTILITIES AND LOCAL GOVERNMENTS DESIGNED TO DEVELOP LONG-TERM DEDICATION TO **ENERGY EFFICIENCY**
- INVESTOR OWNED UTILITIES THROUGHOUT **CALIFORNIA** PARTICIPATE
- OVER **60 COUNTIES** AND **370 CITIES** PARTICIPATE STATEWIDE









City of West Hollywood  
California 1984



City of  
**Santa Monica**



# WEST SIDE ENERGY PARTNERSHIP

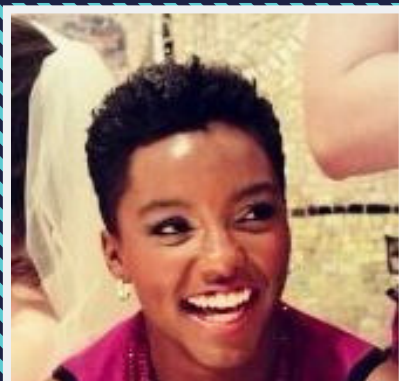




# NORTH ORANGE COUNTY CITIES ENERGY PARTNERSHIP







# WEST HOLLYWOOD

ROBYN EASON, SENIOR SUSTAINABILITY PLANNER



## DEMOGRAPHICS

Population: 37,657

Size: 1.88 mi<sup>2</sup>

Founded: November 29, 1984

## JOINED PARTNERSHIP IN 2018

## PARTNERSHIP SAVINGS 2006 - PRESENT

296,265 kWh (11%)





# ORANGE

JOSH SOLIZ, PUBLIC WORKS ADMINISTRATIVE MANAGER



## DEMOGRAPHICS

Population: 140,094

Size: 25 mi<sup>2</sup>

Founded: April 6, 1988

JOINED PARTNERSHIP  
IN 2015

PARTNERSHIP SAVINGS  
2006 - PRESENT

1,793,404 kWh (11%)





# UTILITY PARTNER

SCOT MANN, SCE PROGRAM MANAGER



**SAN GABRIEL VALLEY**  
**ENERGY WISE PARTNERSHIP**



**Because It Matters**

**PARTNERS FOR ENERGY EFFICIENCY**

ORANGE COUNTY CITIES ENERGY PARTNERSHIP



**SOUTH BAY**  
**ENERGY SAVINGS CENTER**

**South Bay Cities Council of Governments**



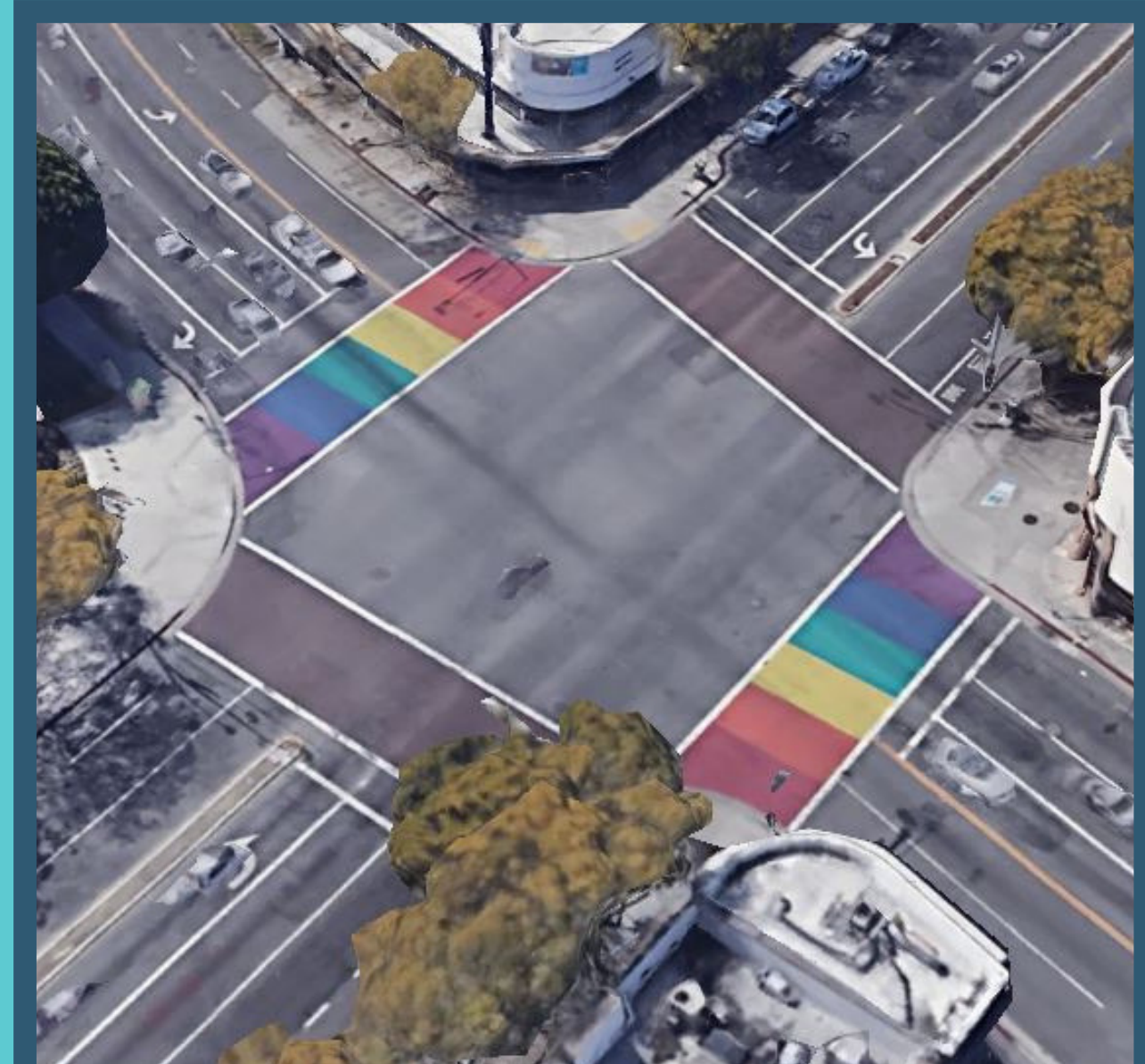


# Participation in Local Government Partnerships

ORANGE, CA



WEST  
HOLLYWOOD, CA





# Energy Policy







# Project Implementation







Regional  
Partners & Peers



The image features a dark blue background with two large, stylized arrow shapes in the top corners. The top-left arrow points right and is filled with light blue vertical stripes, outlined in yellow. The top-right arrow points left and is also filled with light blue vertical stripes, outlined in yellow. In the center-left area, the text 'Q&A' is displayed in a bold, yellow, sans-serif font.

**Q&A**