



## 12th Annual CCEC Forum: Lunch 2

August 4, 2021 | 12:00 - 1:00 pm

# Resilience Hubs: Equitable Climate Solutions





# Thank you to...

*Our sponsors for making the forum possible!*



Local Governments Empowering Our Communities





# Thank you to...

## Our promo partners for extending our reach!



**ARCCA**



CAPITAL REGION  
CLIMATE READINESS  
COLLABORATIVE



Center for  
Sustainable  
Energy®



CENTRAL  
COAST  
CLIMATE  
COLLABORATIVE

**Clean**  
Coalition



**Climate  
Collaborative**  
SAN DIEGO REGION



Climate  
Resolve



**DRAWDOWN**  
BAY AREA



**ICLEI**  
Local Governments  
for Sustainability  
USA



**ISLAND  
PRESS**



LOCAL GOVERNMENT  
**SUSTAINABLE  
ENERGY COALITION**



**Better Buildings  
CHALLENGE**  
U.S. DEPARTMENT OF ENERGY  
LOS ANGELES



**LARC**



goes solar



ProspectSV



San Diego  
Energy District



SAN DIEGO  
GREEN  
BUILDING  
COUNCIL



**SGVCOG**  
San Gabriel Valley Council of Governments



**SJVCEO**  
Clean Energy Organization



**SOMAH**



# Zoom Features

## Microphone

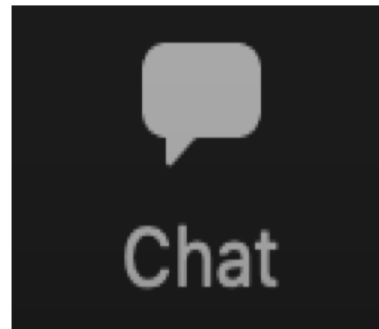
Keep yourself **muted** so that we can hear our speakers clearly

**Unmute** yourself when speaking



## Chat

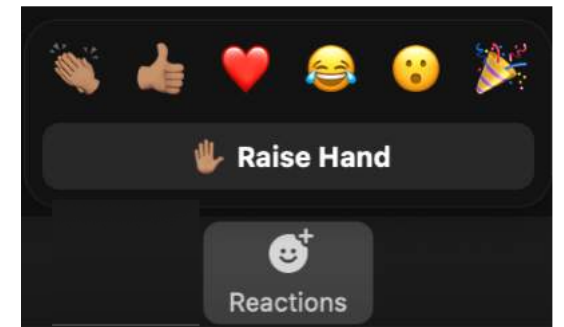
Communicate with other participants or reach out to LGC staff if you encounter technical issues.



## Reactions

Click the icon to **raise your hand** to ask to speak verbally.

We encourage the use of emojis!







# Meet our Speakers!



**Moderator**  
**Shayna**  
**Hirshfield-Gold**  
*Climate Coordinator,  
City of Oakland*



**Susan Silber**  
*Executive Director,  
Norcal Resilience  
Network*



**Patrice Strahan**  
*Community Organizer,  
Disability Justice Culture  
Club*



**Hoi-Fei Mok**  
*Sustainability  
Manager,  
City of San Leandro*

# **California Climate & Energy Forum**

## **Resilience Hubs: Equitable Climate Solutions**

**Susan Silber**

**NorCal Resilience Network**



**Land Acknowledgement: We are in unceded Huichin territory of the Chochenyo Ohlone people in Oakland and Berkeley, CA.**

*Please consider supporting the Sogorea Te Land Trust is an urban land trust founded in 2012 with the goals of returning traditionally Chochenyo and Karkin lands in the San Francisco Bay Area to indigenous stewardship and cultivating more active, reciprocal relationships with the land.*



*Photo: Corrina Gould at Berkeley Shellmound Ceremony/Action*





**THE NORCAL RESILIENCE NETWORK**  
is catalyzing a Just Transition  
to an equitable and regenerative region  
by supporting and activating community-based and ecological  
solutions in Northern California.



# ROOTED IN RACIAL AND SOCIAL JUSTICE AND JUST TRANSITION PRINCIPLES





# READY FOR ANYTHING

COVID -19

Climate disruption

Social and political unrest

Fires

Economic uncertainty

Drought

and...







## Community Resilience

“Social networks—the horizontal and vertical ties that connect us to others—are our most important defense against disasters.” Daniel P. Aldrich





Circle of  
Collaborators

2.  
Resilience Hubs  
Initiative

3.  
Fundraising

NorCal Resilience Programs







# Resilience Hubs, Spaces & Blocks



Community-driven gathering places which are demonstrations for climate solutions, and serve to coordinate & exchange communication, distribute resources, and support community programming both during emergencies and year-round.

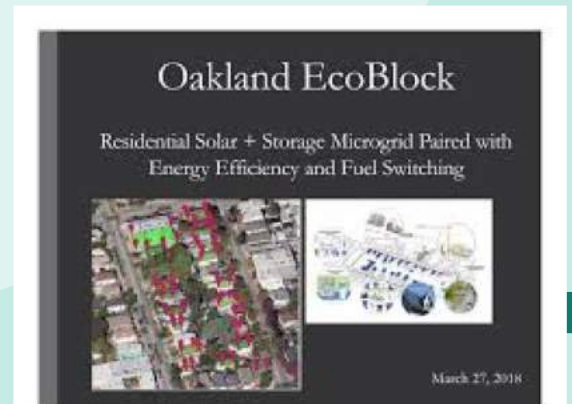
## Resilience Hubs



## Resilient Spaces



## Resilient Blocks & Neighborhoods



# USDN RESILIENCE MODES

<b>Everyday</b> <i>(non disruption)</i>	All infrastructure and services are available. No major disruptions are present. Primary focus is on community services and programming and relationship-building. Proactively planning for disasters.
<b>Disruption</b>	Disruption to normal everyday function for any duration: natural disasters, health-disasters (pandemic) and human- influenced disruptions. Disruption can vary from minutes to months or years.
<i>Short-term</i>	Shocks or events that hit relatively quickly: i.e. earthquakes, fires
<i>Long-term</i>	Disruptions that last longer and impact “everyday mode”: i.e. COVID pandemic
<b>Recovery</b>	Process of returning to everyday mode. The aftermath of the disruption during which the community works to restore normal or better conditions. Can last days to years.



## Resilient Services and Programming

Services and programs that build relationships, promote community preparedness, and improve residents' health and well-being.



## Resilient Communications

Building relationships and respect, communications within and outside the service area during disruptions.



## Resilient Buildings and Landscapes

Strengthening the resilience of the facility to ensure that it meets operational goals in all conditions, including earthquakes. Demonstration for climate solutions.



## Resilient Power Systems

Ensuring uninterrupted power to the facility during a hazard while also improving the cost-effectiveness and sustainability of operations in all three resilience modes.



## Resilient Operations

Ensuring personnel and processes are in place to operate the year-round and also continue operating during disruption and recovery. Distribution of food & other emergency materials.



# RESILIENCE HUBS

**NorCal Resilience Definition:** Resilience Hubs are community-serving facilities augmented to support residents & community members during disasters, while serving as demonstration sites for climate and nature-based, regenerative solutions year-round. The sites coordinate & exchange communication, distribute resources, and support community programming.

Places of worship, libraries, schools, community centers (youth, senior, recreation), apartment complexes, co-housing/intentional communities

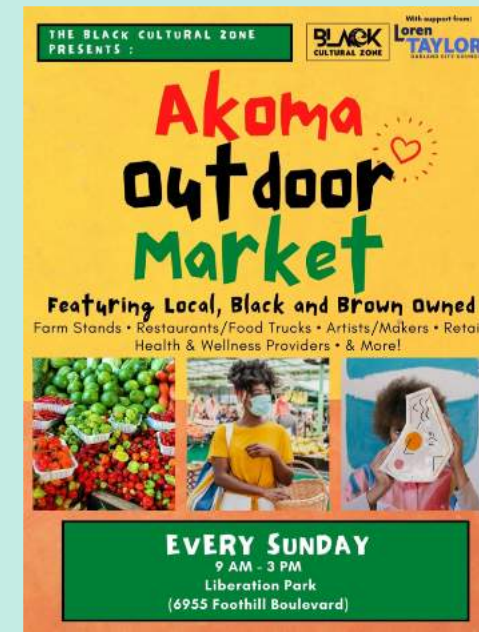




# RESILIENT SPACES

Community spaces (*without buildings*) that are intended to enhance or support community resilience through disaster preparedness, climate solutions and community programming

Community gardens, parks, open spaces, smaller businesses, schools, unhoused encampments with a community resilience focus, tiny home villages, *apartment complexes*



# RESILIENT BLOCKS & NEIGHBORHOODS

**Resilient Blocks & Neighborhoods:** neighborhood-based approach; neighbors working together to build resilience



## Steps to Create Your Fire Safe Council



### 1. Talk to Your Neighbors

- See who is already doing what
- Recruit interested community members



### 2. Make Connections

- Contact MCFSC; collaborate with other residents & stakeholders
- Pool knowledge and get others engaged



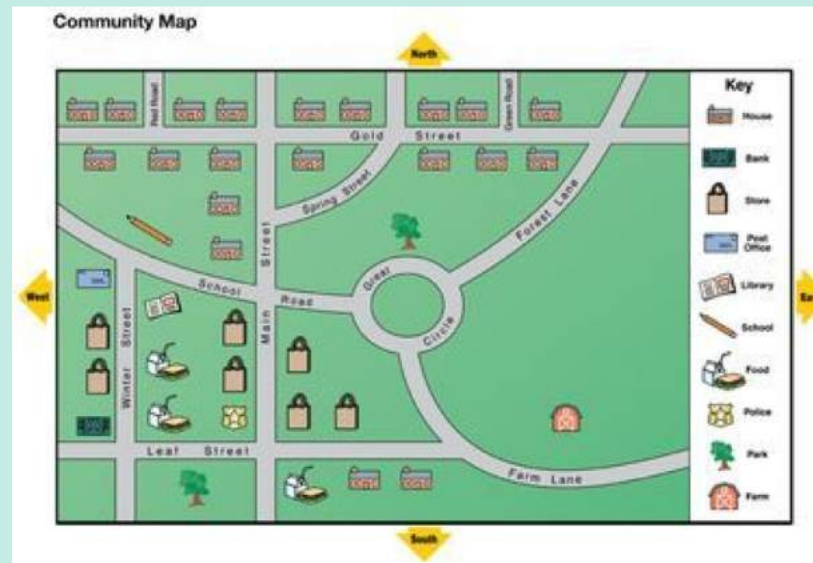
### 3. Create a Plan

- Identify goals and objectives
- Assess where you are at and where you want to go



### 4. Implement the Plan

- Demonstration projects
- Gain and maintain momentum





# La Colina Community Circle (El Sobrante neighborhood)



Neighbors potting up volunteer seedlings







Building resilience, building community



*Swale-ing the  
neighborhood  
With work parties*



Disaster  
Preparedness



# Non Site-based Partners

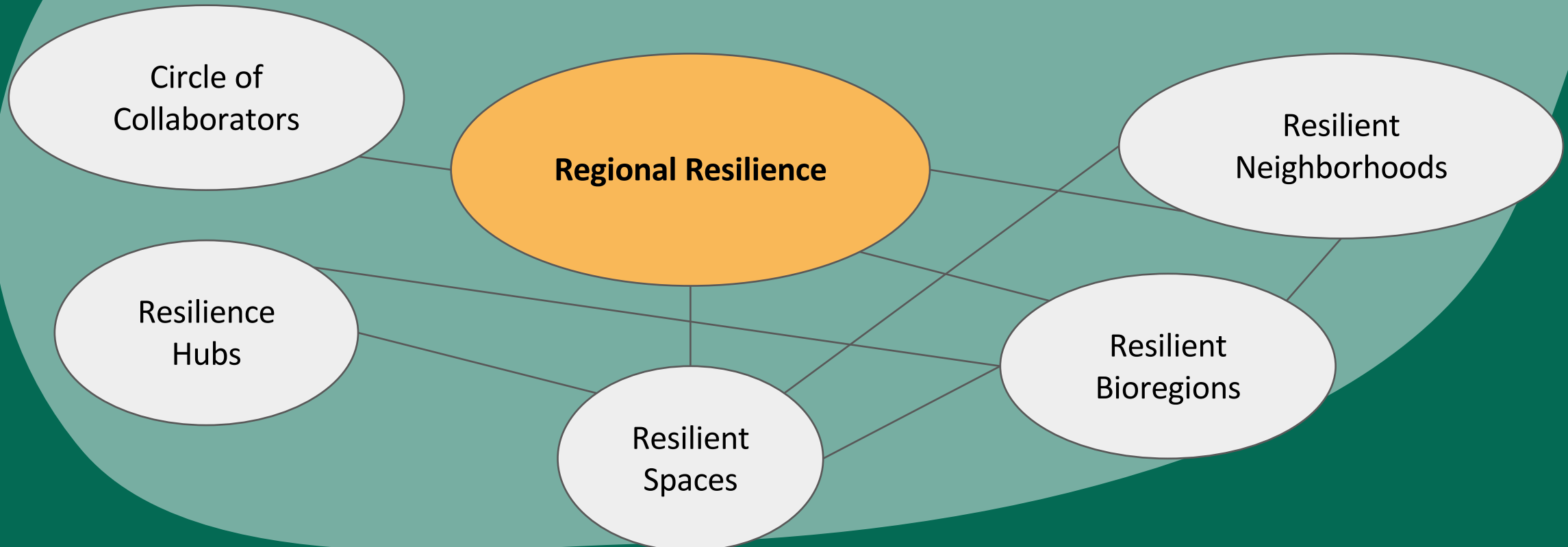
**Circle of Collaborators:** Community Resilience Practitioners who are supporting the development of community resilience hubs, spaces & blocks

- ❖ Businesses: solar installers, water conservation infrastructure, earthquake retrofitting
- ❖ Nonprofits and Community Groups: community organizing, workshops, skill shares, policy work, stories
- ❖ Local governmental agencies



# Vision:

Create a network of hubs, spaces, blocks, neighborhoods and bioregions in Northern California  
*8-month leadership program in process*





# Resilience Hubs Leadership Training Cohort

## February-September 2021

### Program Goals



- ❖ To plan for, create and support resilience hubs, spaces, neighborhoods and blocks throughout Northern California that build the skills, relationships and capacity to respond effectively to change and crises
- ❖ To uplift and learn from existing resilience-based programs and sites
- ❖ To root equity and culturally relevant programming at the center
- ❖ To introduce an equitable holistic approach to resilience: the integration of trauma-informed, permaculture-based climate solutions with disaster preparedness

# Resilience Hubs Leadership Training

## Monthly Training sessions + Skill Shares

- ❖ Average of 50 people per session, bringing together folks from Santa Cruz up to Humboldt County

## + Potential for 40 sites to be more activated as resilience hubs, spaces, blocks and bioregions

- Community gardens
- Community Centers
- Co-housing communities
- Apartment complexes
- Health Centers
- Neighborhoods
- Places of worship

*“I love listening to the stories of smart people on the ground, doing the work!”*

*“I am learning that I am a part of something bigger and it makes the work ahead of me feel less overwhelming.”*

**16 Government Partners, including Listening Partners**









# LESSONS LEARNED

Raise funding to support resilience hubs sites.







# Our Vision

## “Just Resilience Fund”

### GOALS:

- ❖ To create **intermediary fund(s) with both private and public dollars**, that redistributes funds to place-based projects and community groups, prioritizing smaller projects for resilience hubs, spaces and blocks in vulnerable communities
- ❖ To implement an equitable, community-based and democratic process to distribute the funds
  - Grant proposals read by community members





# LESSON LEARNED

## More Practical Training Workshops

*Eg: site assessments, community visioning sessions, training workshops & sessions*

- ❖ **Training sessions by sector:** recreation centers, youth centers, senior centers, libraries, unhoused encampments, community gardens, schools, apartment complexes, co-housing/intentional communities
- ❖ **Training sessions by bioregion:** resilience hubs, spaces & blocks + nonprofit organizations/community groups
- ❖ Skill Shares







## LESSON LEARNED

**Foster deeper and more authentic relationships across sectors & communities**

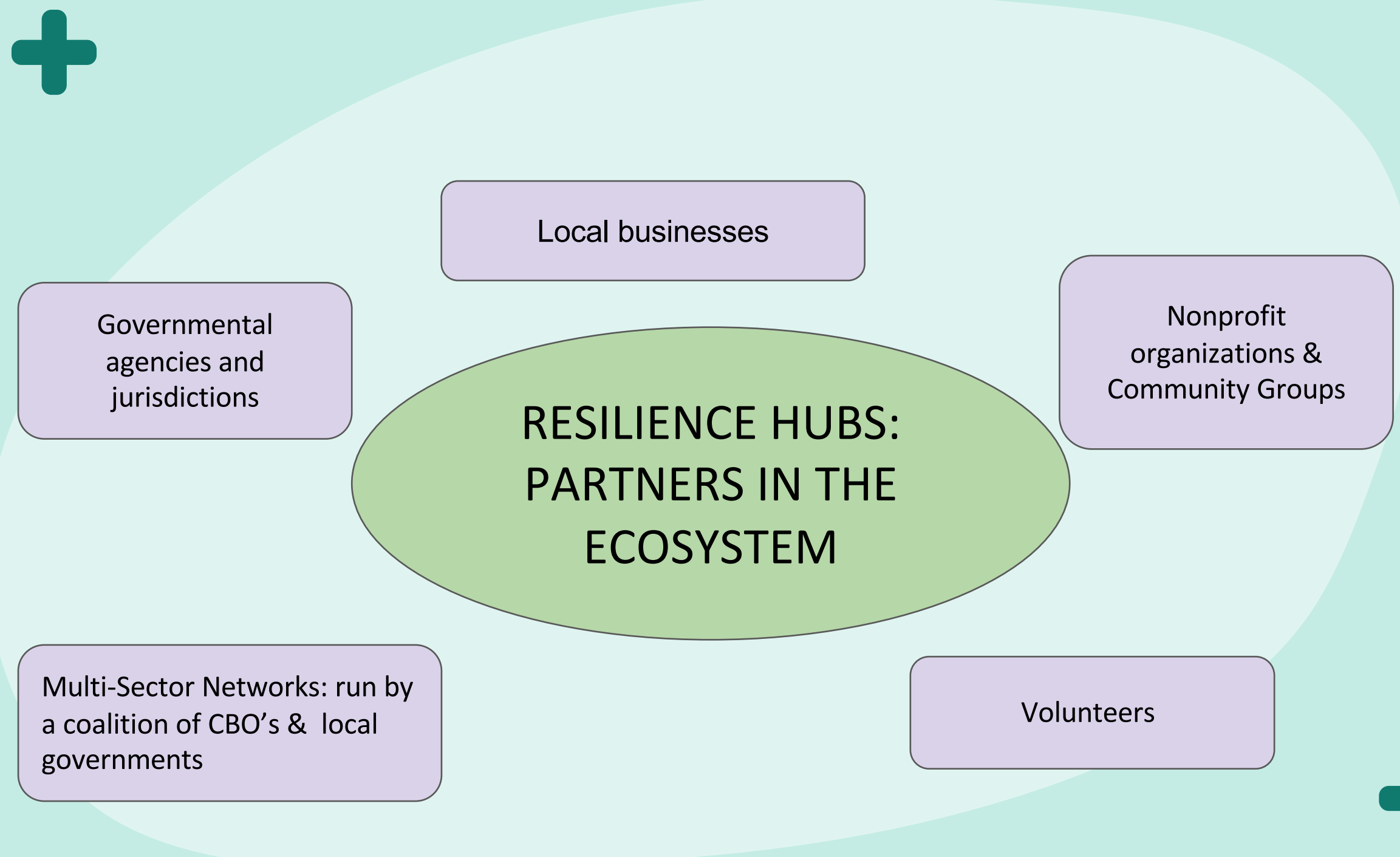
Panel Discussions, Project Collaborations, skill shares











The diagram features a central green oval containing the text "RESILIENCE HUBS: PARTNERS IN THE ECOSYSTEM". Surrounding this central oval are five light purple rounded rectangular boxes, each containing a different partner category. The background is a light teal color with a large, faint white oval shape. In the top-left and bottom-right corners, there are teal-colored plus signs and a small teal dot.

## RESILIENCE HUBS: PARTNERS IN THE ECOSYSTEM

Local businesses

Governmental  
agencies and  
jurisdictions

Nonprofit  
organizations &  
Community Groups

Volunteers

Multi-Sector Networks: run by  
a coalition of CBO's & local  
governments



[susan@norcalresilience.org](mailto:susan@norcalresilience.org)





# DJCC & Community Aid



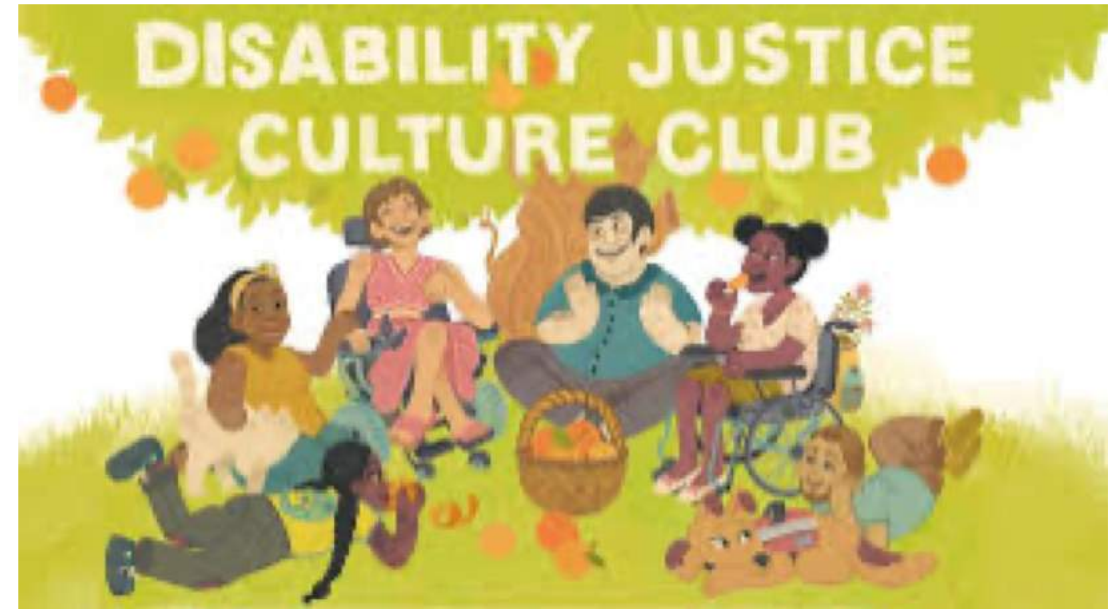
PATRICE • DISABILITY JUSTICE CULTURE CLUB

## DJCC Origins

## Community in Practice

## Power To Live

## Volunteer Resource Network





---

# DJCC: Mission & Values



Mission: We are a collective led by and centering disabled and neurodivergent QTBIPOC, living on unceded Chochenyo/Ohlone territory in deep East Oakland.

---



We work toward liberation by cultivating connections and community spaces (both physical and virtual) that empower and uplift. We achieve this by sharing resources and skills, building relationships, and wisdom-sharing in all directions. While we value the importance of interdependence with other communities, it is imperative to us that we create spaces of belonging for our own communities to be empowered to help lead our way toward liberation together.





## DJCC Origins

- DJCC founded by Stacey Park Milbern
- First formal meetings as a group in 2020
- Through association with Stacey, active earlier

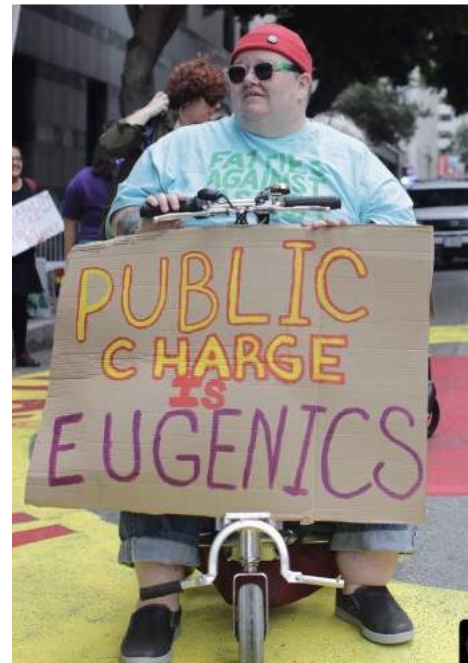




## DJCC Origins

- Stacey was active in D.J. activism and advocacy for decades
- Importance placed on cross-movement collaboration





## DJCC Origins

- Cross-movement collaboration with Max Airborne and Fat Rose/FatLib Ink
- #NoBodiesDisposable
- #PowerToLive
- Crip Camp, Sen. Sanders' D.R.



## Community in Practice

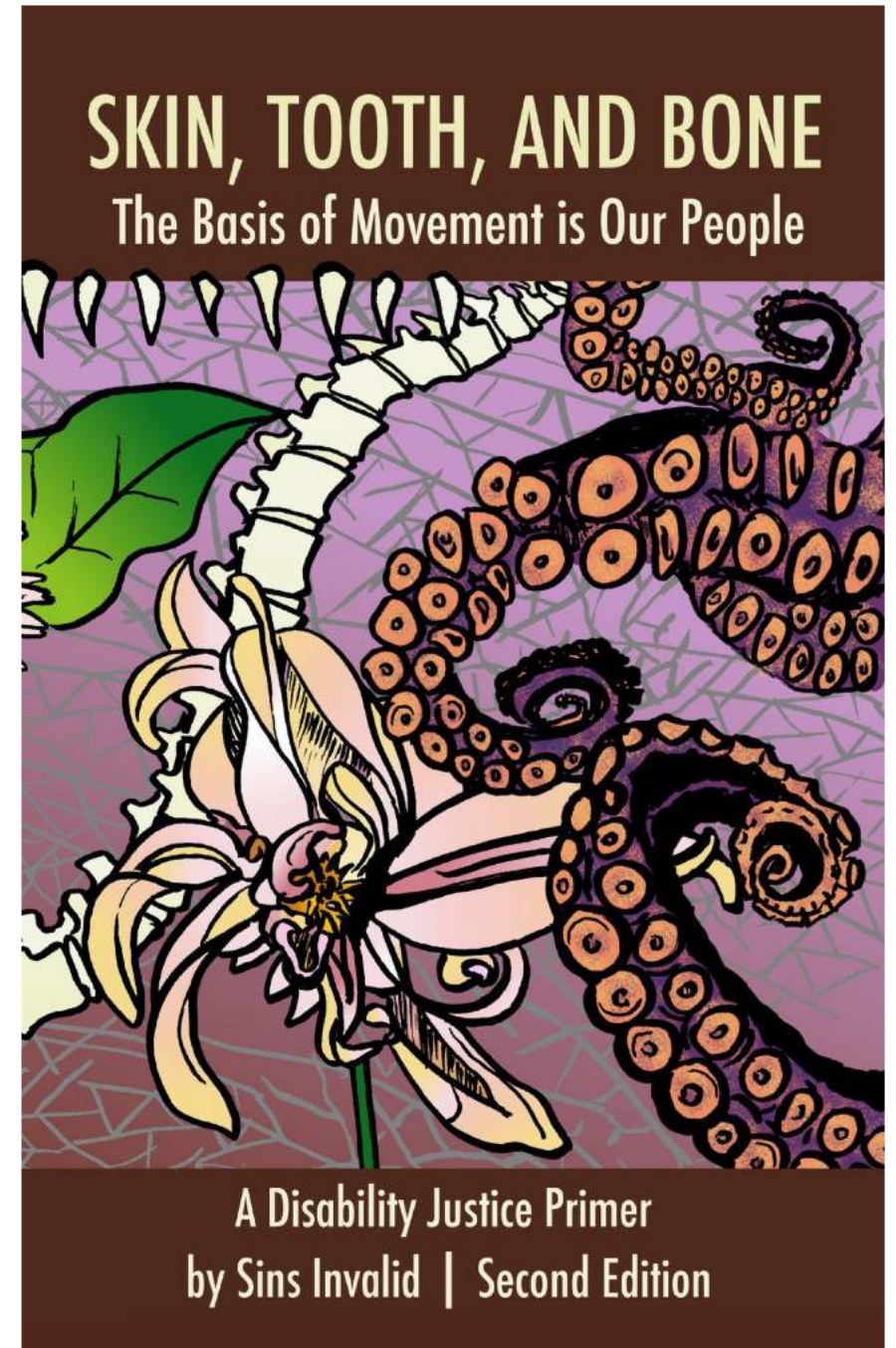
- Created DJCC as a DJ community hub
- “Revolution and chill”
- Movement Work/Activism combined with community building and relationship building
- Attending actions and hosting clubs/celebrations
- Connection, support, empowerment



# Community in Practice

## 10 Principles of Disability Justice

1. Intersectionality
2. Leadership of the Most Impacted
3. Anti-Capitalistic Politic
4. Commitment to Cross-Movement Organizing
5. Recognizing Wholeness
6. Sustainability
7. Commitment to Cross-Disability Solidarity
8. Interdependence
9. Collective Access
10. Collective Liberation



## Disability Justice Framework

“A disability justice framework understands that:

- All bodies are unique and essential.
- All bodies have strengths and needs that must be met.
- We are powerful, not despite the complexities of our bodies, but because of them.
- All bodies are confined by ability, race, gender, sexuality, class, nation state, religion, and more, and we cannot separate them.





# Community in Practice

- Experience not required
- Your own lived experience as a disabled person is valid and valued
- Intersectionality and cross-movement collaboration valued





# RECLAIM KING'S RADICAL LEGACY

JAN. 20TH NOON Oscar Grant Plaza



Disability justice activists will be at the Reclaim MLK Rally 1/20 speaking about disabled people of color organizing for racial justice!

*Feat. Isis & Dasow!*



Join the disability contingent at 11:45 am. All are welcome. Message us if you need a mobility device or access support.

“I want to leave a legacy of disabled people knowing that we are powerful and beautiful because of who we are, not despite it”, Stacey Park Milbern





## Community in Practice

- Shared resources and shared wisdom through cross-movement, intersectional relationships



## Mutual Aid

“Work to meet each others’ survival needs that’s based in a shared understanding that the systems we live under aren’t going to meet them and are actually causing the crises ...

Dean Spade

### Three Main Components of Mutual Aid

- Helps meet people’s fundamental survival needs
- Builds movements and is an on-ramp to movement participation
- Practice space for the world we’re trying to live in

Mutual aid is NOT:

- Hierarchical
- Quid pro quo or transactional
- Charity or a way to “save” people
- A reason for a social safety network not to exist

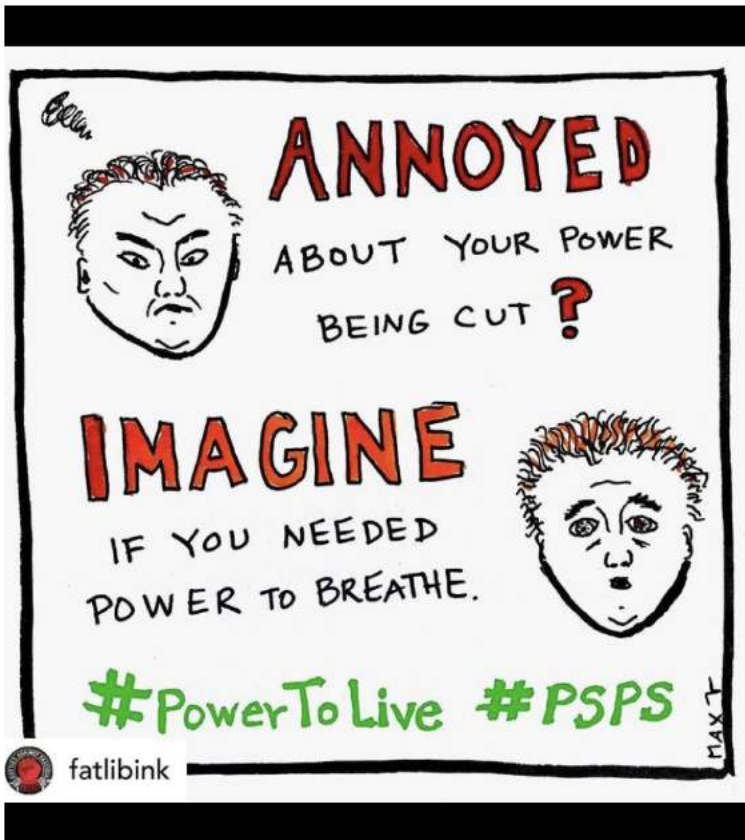
Mariame Kaba

- No strings attached
- No stigma for people who are in crisis
- No rigid eligibility criteria
- Cooperative
- Co-stewarding resources



“One part of larger social movement ecosystem getting to the root causes of poverty and violence”













#PowerToLive

# We Need #PowerToLive

## SURVIVAL



#PowerToLive is a coalition of groups and individuals in the SF Bay Area who joined together in 2019 in response to life-threatening power shutoffs by PG&E. Most of us are BIPOC, disabled, or fat. Many of us require electricity to survive.

## SOLIDARITY



We built an all-volunteer network of mutual aid — community members saving our own lives where PG&E, state and local governments were failing to do so. We worked to make sure those most vulnerable in a disaster were not forgotten.

## ACTION



JOIN US on December 16th, 2019, at 12pm, when a coalition of frontline groups will be gathering at PG&E headquarters, 77 Beale Street, San Francisco, to demand power to live.

## Collaborators



Disability Justice Culture Club



Fat Rose



Access Centered Movement



Mask Oakland



Creating Freedom Movements



Community Ready Corps



Disability Visibility Project



Senior and Disability Action



## We demand:

- 1) That PG&E give back all shareholder profits until PG&E can safely provide life-saving power.
- 2) That PG&E invest in frontline communities' basic power needs.
- 3) That Gov. Newsom and CPUC turn PG&E over to the people. Utility justice is Climate Justice.

"Often times, disabled people have the solutions that society needs. We call it crip — or crippled — wisdom," said Milbern, 32, who has a day job as a human resources specialist. "We know how infections spread and how to properly wear a mask and wash your hands."



Charley Bowden pours handmade hand sanitizer into small bottles. (Courtesy of Stacey Milbern)

## DJCC COVID Response

- Before the resource network
- Shared knowledge and did research
- Began reaching out to connections to see who needed support and who also had networks they could distribute to



# East Bay Disabled Folks COVID19 Support Request Form

NO NEW APPLICANTS AT THIS TIME

Hello to all,

Well wishes to you and thank you for reaching out. At this time, Disability Justice Culture Club is temporarily pausing on accepting new applications. We're currently developing our plans for how to move forward with the mutual aid project and will share those plans as soon as we're able. We will also soon be posting a list of other mutual aid networks to reach out to for support.

If you are in Berkeley, please contact Easy Does It Emergency Services at (510) 704-2111. If you're in San Francisco, there is a mutual aid network being led by SDA that is supporting San Franciscans ( [https://docs.google.com/forms/d/1hqLnUN22aMoRnKnJJF2CzNP7u-RG5-rhZAz509z9wxE/viewform?edit\\_requested=true](https://docs.google.com/forms/d/1hqLnUN22aMoRnKnJJF2CzNP7u-RG5-rhZAz509z9wxE/viewform?edit_requested=true) )

Sincerely,  
DJCC

No Estamos Aceptando Nuevas Aplicaciones En Este Momento

Este es un cambio temporal. Ahora estamos creando un nuevo plan sobre cómo continuar este proyecto. Les diremos a todos nuestro nuevo plan cuando esté completo.

Estaremos contactandote dentro de 48 horas. Si estas en Berkeley, porfavor contacta Easy Does It Emergency Services al (510) 704-2111. Si estas en San Francisco hay alluda mutua que estan dirigidas por SDA que apollan a personas de San Freancisco ( [https://docs.google.com/forms/d/1hqLnUN22aMoRnKnJJF2CzNP7u-RG5-rhZAz509z9wxE/viewform?edit\\_requested=true](https://docs.google.com/forms/d/1hqLnUN22aMoRnKnJJF2CzNP7u-RG5-rhZAz509z9wxE/viewform?edit_requested=true) )

## DJCC COVID Response

- In ways, not true 'mutual aid'
- Volunteer Resource network
- Leadership by DJCC core team
- Point people connect with requesters
- Point person relays requests to Resource Coordinator
- Resource Coordinator connects Point Person to volunteers/resources

HOSTED BY DISABILITY JUSTICE CULTURE CLUB

**SAT  
APR  
11TH  
2-4P**

## **COVID19 EMERGENCY LEGAL DOCUMENT PLANNING (CA ONLY)**

LEGAL CLINIC TO WRITE YOUR  
ADVANCED CARE DIRECTIVE,  
POWER OF ATTORNEY, AND WILLS

DONATION BASED. FREE FOR BIPOC

## **DJCC COVID**

### **Response**

- Webinars to come together to share wisdom
- Access-focus
- Issues relevant to our community
- Opportunities to center and support the voices of disabled community





## DJCC COVID

### Response

- Hundreds of requests
- Hundreds of volunteers
- Around 50 recurring requesters
- In operation since March 2020

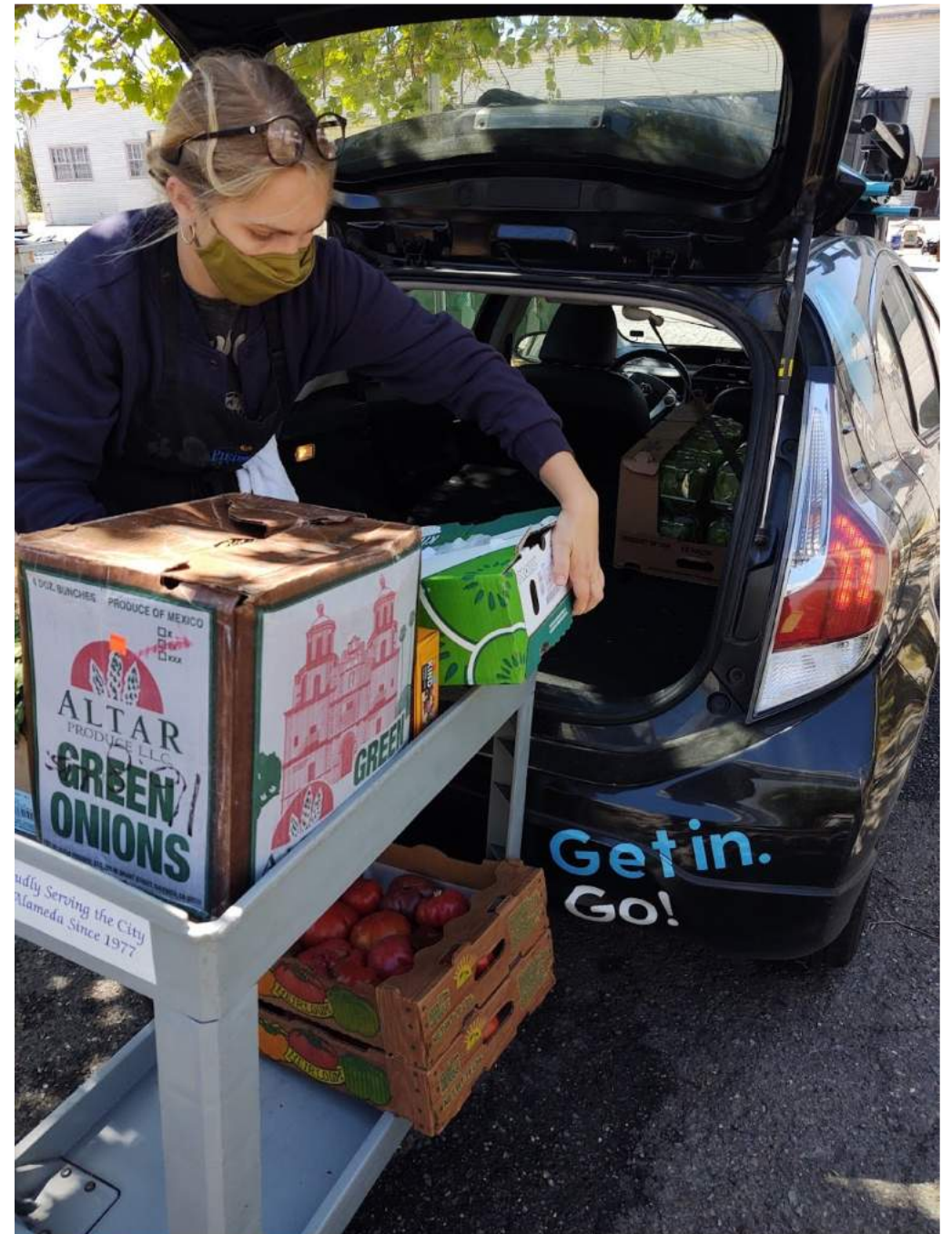




## DJCC COVID Response

- Challenges
  - Work with/within systems where values differ
  - Urgency
  - Burnout / Conflict
  - Collective Work
- Victories
  - Impact
  - Connecting with others (orgs and individuals)
  - Continued connection, support, empowerment













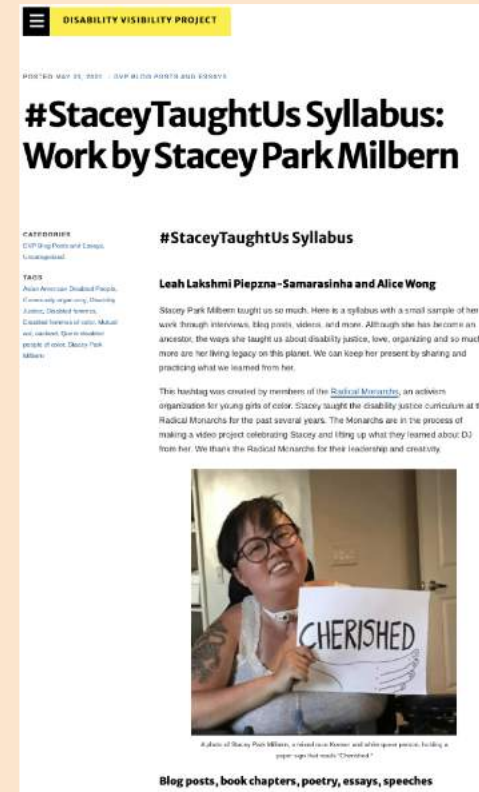
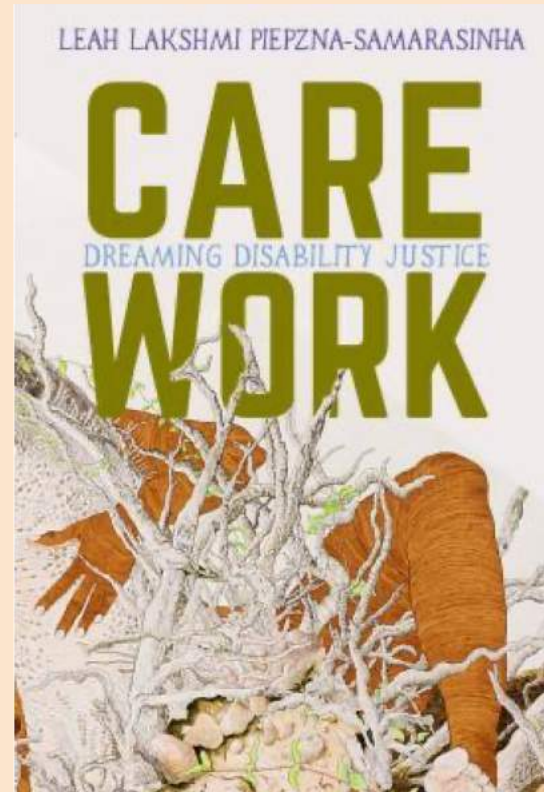








# Resources







# Supporting Resilience Hubs from Local Government

---

Hoi-Fei Mok

City of San Leandro







# Getting to the Leadership Program

- USDN rapid response grant of \$15K and coordination between San Leandro, Oakland, Fremont, San Rafael, Berkeley, Alameda County
- Agencies actively participated in recruiting CBOs as hub sites and giving input to the program curriculum design/logistics, meeting weekly or biweekly from Oct 2020-Jan 2021.

## Getting to the Leadership Program

- Gov training held in Jan 2021 to cover resilience hub concepts, racial justice framework, and role of agencies as partners in the program
  - Training held in partnership with USDN, Facilitating Power, City of San Leandro, and NorCal Resilience
- Program kicked off in Feb with monthly 2hr training sessions and 2hr skill shares for 275 community participants, including 49 gov staff





# Program Outcomes & Benefits



Strong partnerships and relationship building  
btw agencies and CBOs



Identification of community sites ready to  
implement climate action in  
programming/services/infrastructure



Capacity building for orgs and individuals  
around climate action



Practice of active listening by agencies

# Lessons Learned

---

## Difficulties in site recruitment

- Similar capacity building program from Strategic Growth Council offered stipends for participation

## Accommodating last minute requests from partner organizations

- Clear expectations and responsibilities for agencies to set aside staff time and resources

## Participant drop off during program

- Time commitment/scheduling?
  - COVID vs in person?
-



# Next Steps

---

- City of San Leandro will be working with a CivicSpark fellow:
  - Provide technical assistance hub sites on their climate projects and connect to funding resources
  - Trainings for other CBOs who weren't able to participate in leadership program but still need immediate assistance on issues such as heat waves, smoke, power outages
  - Relationship building and recruitment of other potential sites



# Breakout Room Discussion

- Why is this approach to resilience important?
- How should we foster resilience hubs in our jurisdictions?
- What other ideas do you have for implementing resilience hubs?





# Thanks again to...

*Our sponsors for making the forum possible!*



Local Governments Empowering Our Communities





# Upcoming Events



## 12th Annual California Climate & Energy Forum

*Transforming Tomorrow Together*

**August 3 - 19, 2021**

**Post-Session Survey:**  
[bit.ly/CCEC-Post-Session-Survey](https://bit.ly/CCEC-Post-Session-Survey)

### WEEK 1

- **8/5 Webinar 2:**  
Soup to Nuts: An Interagency Approach to Guiding Constituents from Education to Energy Savings
- **8/5 Webinar 3:**  
Sustainable Procurement: Opportunities for Local Government

### WEEK 2

- **8/10 Webinar 4:**  
Increasing EV Adoption: From Paper to Production
- **8/10 Webinar 5:**  
Planning for Equitable Existing Building Electrification

To view the entire program visit [eecoordinator.info/forum-program/](https://eecoordinator.info/forum-program/)