

# Local Energy Resources Network



Meeting 51

April 14, 2026

*HAPPY HEAT PUMP WEEK!*



# Welcome!

## Purpose

Interactive 1-hour meetings designed to be a regular space where local governments - and those who work with them - can help each other learn about (and possibly inform) available opportunities to advance their energy and climate goals.

## TODAY'S AGENDA

- Opportunity Roundtable
- Opportunity Spotlights
  - SB 54 & SB 1180 Plastic Pollution Mitigation Fund
  - CEC 2026 Electrification Summit and Benchmarking Updates
- Featured discussions:
  - Extreme Heat and Community Resilience Grant Updates
  - Equitable Building Decarbonization (EBD) launch updates
- CCEC Updates:
  - Assistance Marketplace & Forum Registration
- Bonus Breakout
  - Energy bills in the legislative session: peer-knowledge exchange



# Opportunity Roundtable

[View all Opportunities](#)

## Policy Drives Investment



## Agencies Scope/ Design Assistance Programs & Gather Input



## Applicants Apply to Funding Solicitation

### State

- FY [2025-2026 State Budget](#) (highlights); [SB/AB 102](#), budget bills (Prop 4, Cap & Invest Reauthorization)
- [AB 35](#) - APA exemption for Prop 4
- [CNRA Prop 4 Tracker](#)
- [Nielsen-Merksamer Prop 4 Details](#)

- [CCEC Legislative Tracker](#)
- [AB 2508](#) - Assembly U&E approved
  - [SB 1180](#) - Plastic Pollution Mitigation Fund

### Federal

- FY 2025-2026 Federal Budget (HR. 1) - [tax credits guidance for solar/win](#)
- [H.R. 3699](#) "Energy Choice Act"

### International

### Funding

- Robert Wood Johnson Foundation: [Local Data for Equitable Communities](#) - April 30, 2026
- SGC: [Affordable Housing & Sustainable Communities \(AHSC\)](#) - May 4, 2026
- SGC: [Factory Built Housing R3](#) - May 5
- CEC: [Reliable Electric Charging for Eligible School-bus Sites \(RECESS\)](#) - Pre-App Workshop April 16; Apply by June 5
- CalFIRE: [Forest Heath](#) - June 8, 2026
- CEC: [Solar PV Located in Non-traditional Terrain \(SPLINT\)](#) - June 9
- FEMA: [Building Resilience Infrastructure and Communities \(BRIC\) Grants](#) - July 23, 2026
- CalOES/CAL FIRE: [CA Wildfire Mitigation Program](#) - ongoing

### On the horizon...

- LCI: [Extreme Heat and Community Resilience Program R2](#) - expected in Spring 2026, [Prep Guide](#)
- SGC: [Transformative Climate Communities \(TCC\) Program](#) - expected in Summer/Fall 2026
- SGC: Community Resilience Centers Program

### Other Assistance

- CEC: [REACH Meeting for SD, LA, and Bay Area](#) - April 20
- CARB/CALSTART - [Clean Truck and Bus Voucher Incentive Project](#) (HVIP) - \$5M remaining reserved for public fleets
- CEC: [Guidance Document for 2025 Local Ordinance Applications](#)
- CalOES: [Free technical assistance](#) - Rolling

### Input Opportunities

- Recent CCEC comments can be found [here](#) (SB 100, Building Energy Action Plan)
- CCEC: Next SLECC meeting on June 23rd ahead of CCEC Forum ([register now](#))
- CalEPA: [SB 54 Plastics Pollution Mitigation Fund](#) - survey and workshops - through June
- CEC: [2026-2030 EPIC Investment Plan](#) - pending



# Opportunity Spotlight

## SB 54 Plastic Pollution Mitigation Fund

[Senate Bill 54 \(the Plastic Pollution Prevention and Packaging Producer Responsibility Act\)](#) established a [Plastic Pollution Mitigation Fund \(PPMF\)](#) funded \$500M/year from 2027-2037 by producers of single use plastic materials. The California Environmental Protection Agency (CalEPA), in partnership with the California Natural Resources Agency (CNRA) and the Strategic Growth Council (SGC), oversees the fund's implementation

### FUNDED ACTIVITIES

- Mitigate the impacts of plastic pollution on tribes, communities and the environment
- Address current and historical environmental concerns as they relate to plastic
- Protect the public health of tribes and communities disproportionately impacted by plastic pollution
- *60% of Fund for EJ and Public Health - may be used to support grants to local jurisdictions, tribes, nongovernmental organizations, and community-based organizations*

### FORMAL ENGAGEMENT OPPORTUNITIES & RESOURCES

- [Kickoff Webinar \(Zoom Recording\)](#) from Thursday, March 26, 2026
- Provide feedback on how you'd like to see the fund serve your community via this online [survey](#) or email at [PPMF@calepa.ca.gov](mailto:PPMF@calepa.ca.gov)
- Join PPMF Listserv [PPMF Listserv](#)
- [SB 1180](#): Proposed legislation that, if enacted, would provide guidelines for the implementation of the PPMF.
- [SB 54 Advisory Board and Regulations](#): Additional information relating to the SB 54 Advisory Board and regulations on CalRecycle's website.



## Opportunity Spotlight

# CEC Electrification Summit and Benchmarking Updates

The California Energy Commission (CEC) and the Electric Power Research Institute (EPRI), in conjunction with the Energy Transition Coordinating Council (ETCC), will host the [2026 CEC/EPRI Electrification Summit](#) on June 10, 2026. The event will be in-person only, hosted at the California Natural Resources Agency (CNRA) Headquarters in Sacramento, California. Building on the momentum of the 2023 and 2025 Summits, the event will celebrate major initiatives and focus on continued progress towards California's nation-leading building decarbonization goals. A majority of commissioners from the CEC and California Public Utilities Commission (CPUC) as well as other leading state officials from CNRA and California Air Resources Board (CARB) may attend in person, but no votes will be taken.



# Featured Speaker

*Please add  
questions in the chat*



**Kelly Meza Prado**  
**California's Extreme Heat Grant Program Lead**

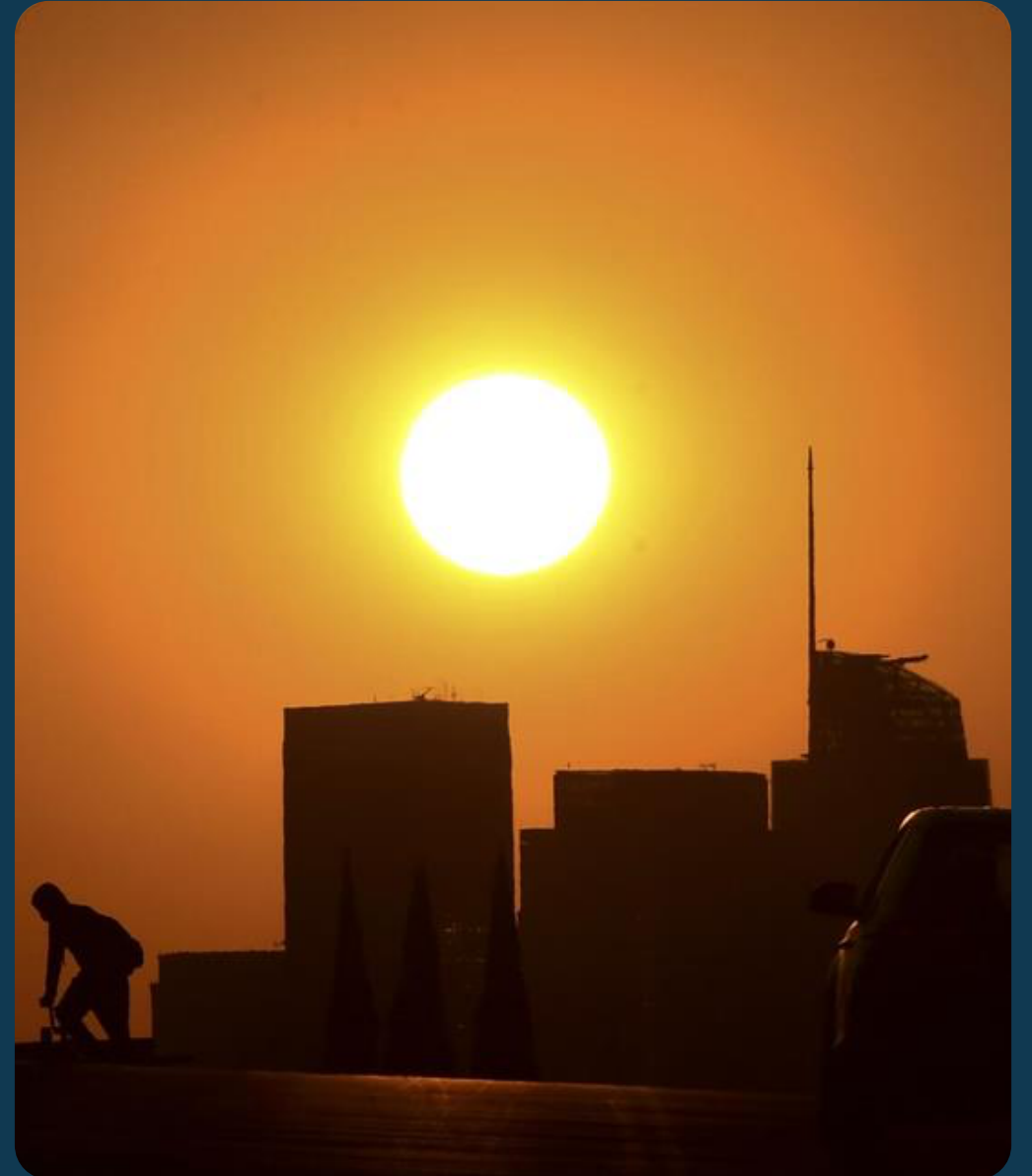


# Extreme Heat and Community Resilience Program

## Round 2 of Funding



CA Governor's Office of  
Land Use and  
Climate Innovation

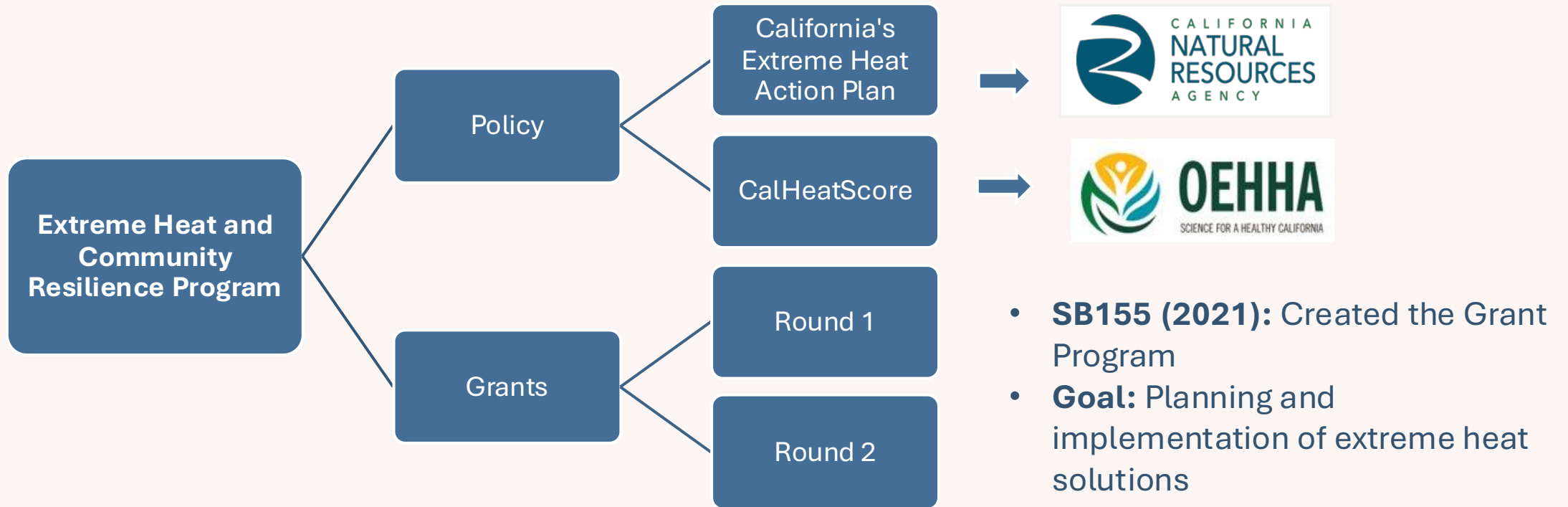


# Agenda

1. EHCRP Background
2. Round 2 Overview
3. Questions and Answers



# Governor's Office of Land Use and Climate Innovation





# Round 2 Funding



27.5 Million USD Dollars



Greenhouse Gas Reduction Fund and Proposition 4



Infrastructure for Extreme Heat



Expected Grants: ~20



# 1. Program Values

## Harm Reduction

Urgency to reduce immediate heat-related illness and death.

## Partnership

Recognizes that effective solutions require both community knowledge and institutional capacity.

## Belonging

Ensures that infrastructure is designed with and for the people who use it.

## Lasting Community Benefits

Investments should extend beyond immediate outputs to contribute to sustained change.



# 2. Project Types

Project Type	Early Infrastructure	Advanced Infrastructure
Purpose:	Focus on infrastructure planning, with pilots or demonstration infrastructure serving as key components to inform the final planning product	Focus on implementing infrastructure based on prior planning and must demonstrate that construction can be completed within the allotted grant time frame
Infrastructure Component:	Pilot tests or demonstrations to inform the final product.	Infrastructure that is ready or nearly ready for development

*Tentative: May change before Notice of Funding Availability release*

# 3. Award Amounts

Total Funding Available: \$27.5 Million

Early: 30-month projects

Advanced: 48-month projects

Project Type	Project Amount	Infrastructure	Partnerships	Belonging
Early Infrastructure	\$600,000 - \$1M	25 - 60% Demonstration Project	15% Minimum	5% Minimum
Advanced Infrastructure	\$2.5M - \$4M	70% Minimum	10% Minimum	5% Minimum



Tentative: May change before Notice of Funding Availability release

\*15% indirect cost

# 4. Eligible Projects

Built Environment Solutions	Nature-Based Solutions
<ul style="list-style-type: none"><li>• <b>Cool Surfaces &amp; Corridors:</b> Cool pavements, reflective coatings, permeable pavements, shade/misting corridors, cool roofs and walls</li><li>• <b>Transit &amp; Public Spaces:</b> Transit station cooling, splash pads, pools, shaded recreational areas, upgraded restrooms</li><li>• <b>Buildings &amp; Homes:</b> Passive and mechanical cooling</li><li>• <b>Energy Resilience:</b> Microgrids and solar + battery storage for cooling centers and critical facilities</li><li>• <b>Agricultural &amp; Rural Workers:</b> Shaded rest structures, hydration and misting stations, on-site cooling for outdoor workers</li><li>• <b>Cooling Hubs</b></li></ul>	<ul style="list-style-type: none"><li>• <b>Canopy Expansion:</b> Forestry plans, targeted tree planting in high-heat areas, pocket forests, tree-lined corridors</li><li>• <b>Green Surfaces:</b> Bioswales, green stormwater systems, and replacing hard surfaces with vegetation for heat reduction and flood mitigation</li><li>• <b>Green Roofs and Walls:</b> Green roofs, living walls on schools, libraries, and community centers</li><li>• <b>Water &amp; Blue Spaces:</b> Natural water features (lakes, beaches), restored natural swimming areas</li><li>• <b>Green Space Restoration</b></li><li>• <b>Indigenous Knowledge &amp; Stewardship:</b> Tribal-led cooling strategies rooted in Traditional Ecological Knowledge (TEK)</li></ul>

*Note: Above are examples and can be a combination of both types*

# 5. Funding Goals

## 2024 Climate Bond Requirements

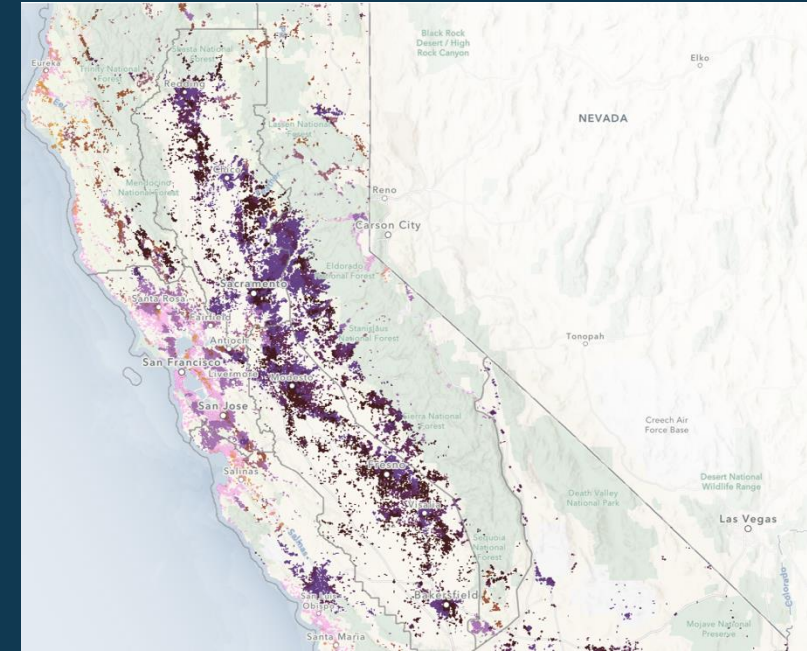
- 40% for Disadvantaged Communities (DACs) and Vulnerable Populations
- 10% must benefit Severely Disadvantaged Communities (SDACs)

## Priority Point Allocations

- California Native American tribe — 15 pts
- Severely Disadvantaged Community — 15 pts
- Disadvantaged Community — 10 pts
- Vulnerable Population — 12 pts

## Vulnerable Population - Extreme Heat designations in the Vulnerable Community Platform

- High Climate Hazard & High Social Vulnerability
- Medium Climate Hazard & High Social Vulnerability
- High Climate Hazard & Medium Social Vulnerability

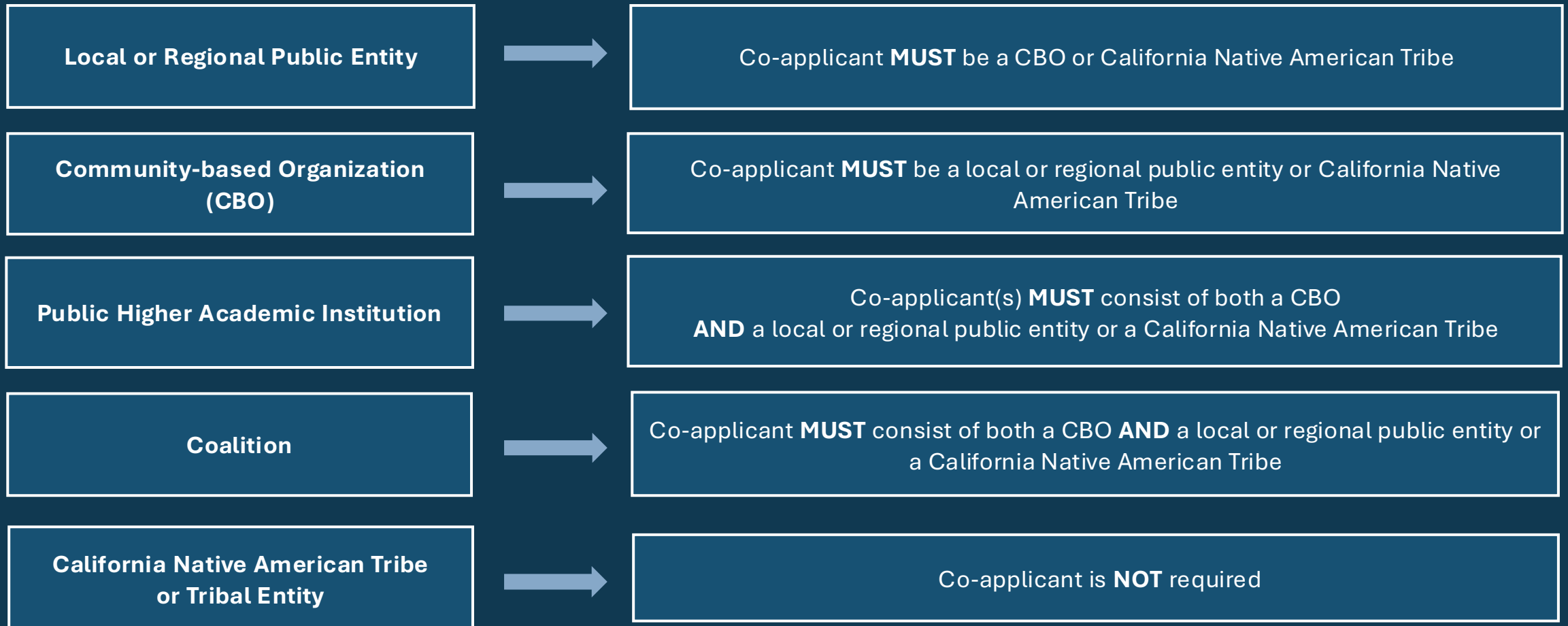


Stockton, CA Metro Area: Block Group  
060770033063

Zoom to

Hazard	Climate Now	Climate Future	Social
☀ Extreme Heat	High	High	High
🌊 Sea Level Rise	NA	NA	NA
🌊 Flooding	Low	High	High
🌵 Drought	High	High	High

# 6. Applicants and Co-Applicants



# 7. CBO Requirements

- **If the Lead Applicant is not a CBO:** The team must include a **qualifying CBO co-applicant**, plus a public or Tribal partner.
- **Local Office Required:** CBOs that are lead or co-applicants must have a staffed office within **100 miles** of the project site.
- **Large / Multi-Region CBOs:** Still required to meet the **100-mile** office rule.
- **Coalitions: Do not qualify** as a substitute for a CBO

\*Refer to page 26 for details on CBO requirements

# 8. Application Process (Pre-Application Form)

## Pre-application form: Window 1 Technical Assistance Requests

Feedback + access to full application

## Pre-application form: Window 2 No Technical Assistance

Feedback + access to full application

## What to submit – Quick Overview

- Project Name & Type
- Project summary and infrastructure description
- Infrastructure location
- Summary on how the project aims to protect people



# 8. Application Process (Full Application Form)

## Full Application Form

- Project Name & Type
- Location (Infrastructure Coordinates)
- Project overview questions
- Harm reduction questions
- Collaboration questions
- Transformation questions
- Belonging questions
- Workplan and budget
- Other documents (financial documents, support letters, etc)



# 9. Application Scoring

## Narrative Section

\*Scored out of 100 points

**7 Points-** Project Overview

**12 Points**  
Harm Reduction

**12 Points-**  
Partnership

**15 Points**  
Funding Priorities

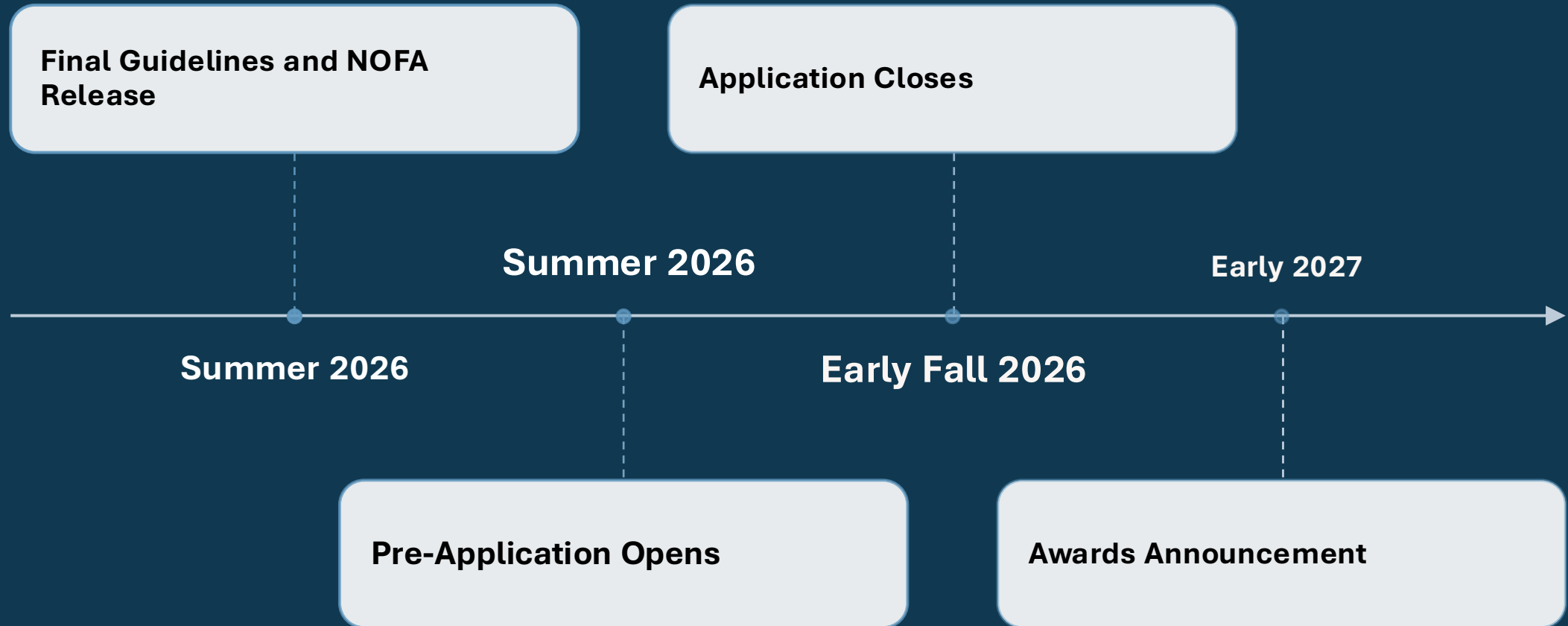
**12 Points** Lasting  
Community Benefits

**12 Points-**  
Belonging

## Workbook Section

**30 Points-** Workplan + Budget

# 10. Round 2 Timeline



# Thank You!



Newsletter

## STAY CONNECTED



@Cal\_LCI



Extreme.Heat@lci.ca.gov



Governor's Office of Land  
Use and Climate  
Innovation (LCI)



CA Governor's Office of  
Land Use and  
Climate Innovation



# Featured Speaker

*Please add  
questions in the chat*



**Lujana Medina**  
**Environmental Initiatives Division Manager**  
**LA County**

# EQUITABLE BUILDING DECARBONIZATION PROGRAM

*EBD Southern California Region Coalition Update*

April 14, 2026



**EQUITABLE BUILDING  
DECARBONIZATION  
PROGRAM**  
**SOUTHERN CALIFORNIA**

# CEC EBD Program Background Information

The Equitable Building Decarbonization Program (EBD Program) will help eligible residential customers electrify their homes at no cost, reducing greenhouse gas emissions and advancing energy equity.

The EBD Program also encourages resiliency to extreme heat, indoor air-quality improvements, energy affordability, grid reliability, and local workforce opportunities.

## EBD Statewide Direct Install Program

- The EBD Statewide Direct Install Program will provide building decarbonization upgrades for low-income and moderate-income households in single-family, multifamily, and manufactured homes in under-resourced communities.
- The program will be administered separately in Northern, Central, and Southern California.

## Program Funding

- Funded by the state general funds as well as federal HOMES/IRA funds the California Energy Commission has applied to DOE for
- **\$329M state and federal funds combined** for Southern California
- Projects will be funded at a 100% grant rate; projects that leverage other funds will be more competitive
- Three administrators will be competitively selected (one per region)

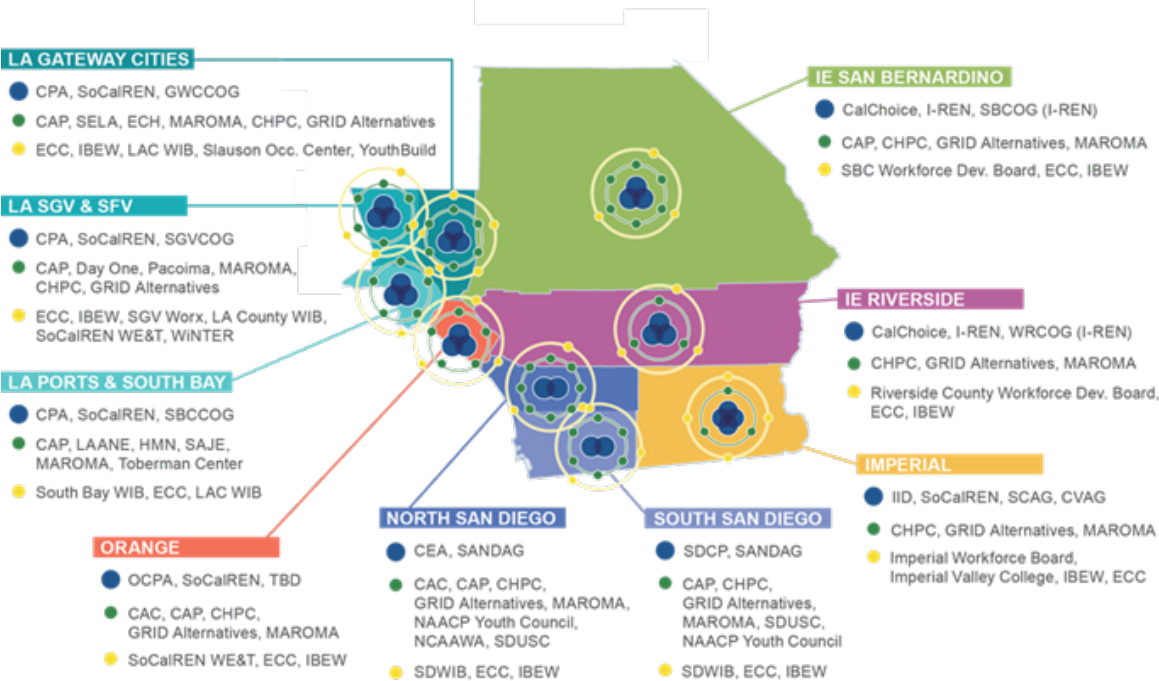


# SoCal EBD Coalition



# MISSION

The SoCal EBD Coalition has come together to align communities with resources and coordinate efforts to ensure the success of the CEC EBD Direct Install Program in Southern California. Our program is designed to be a one-stop shop providing comprehensive project support services from inception to completion for eligible residents to decarbonize their homes at no cost, reducing greenhouse gas emissions and advancing energy equity.



# Residential Decarbonization Infrastructure



Comprehensive direct install program providing **building decarbonization upgrades for low-income and moderate-income** households in single-family, multifamily, and manufactured homes



**Single Point-of-Contact** 'Decarb Concierge (aka Program Advisor)' assisting participants throughout the journey; coordinating trade allies and navigating incentive layering requirements



**Localized Outreach & Education** through network of community based organizations; trusted and recognized voices reaching participants with catered messaging and enrollment



**Workforce Capacity Building** through online and in-person training & certification; leveraging Workforce Investment Board funding for education, training, and wrap around services

# Layering & Leveraging

Layering multiple local, and state incentives funding to cover comprehensive offerings:

- Weatherization & Insulation
- Heat Pump HVAC & Water Heater Heating
- Induction Cook Top & Electric Laundry
- Energy Efficiency
- Electrical Upgrades & Remediation

Leveraging infrastructure to quickly and cost effectively deploy capital into LMI communities:

- Covering 6 counties with project management, technical support, program advisors, construction project managers, and local installers
- Network of local community based organizations for localized outreach and education



ELECTRIC HEAT  
PUMP HVAC



HEAT PUMP WATER  
HEATING



ENHANCED HEALTH  
& SAFETY



WEATHERIZATION  
AND SEALING

# Program Advisor

## Decarb Concierge

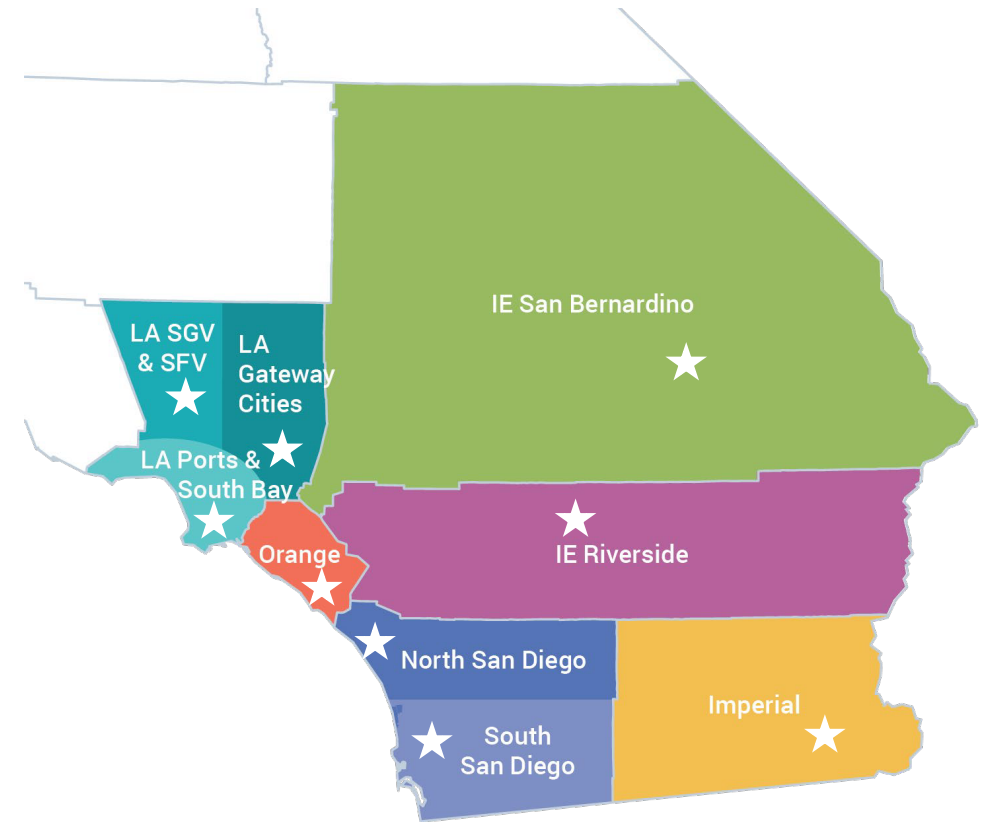
To further enhance the participant experience, the program will employ Decarb Concierge (DC) staff from within the communities it serves. The DC acts as the [single point of contact for program participants](#), providing individualized support from enrollment through post-project satisfaction surveys and ongoing engagement opportunities as program ambassadors.

- The DC facilitates coordination of incentive layering, installation scheduling with homeowners and trade allies, permitting and inspections, and QA/QC processes.
- This continuous support ensures that participants have a seamless and positive experience throughout their decarbonization journey.



# Area Coordinator

- In each subregion, the program will appoint an Area Coordinator (AC). The AC serves as the **single-point-of-contact for all program resources and support for Power Partners and Energy Partners**.
- ACs will be hired from within your communities and trained with dollars outside EBD.
- Your AC will hold bi-weekly subregion team meetings to hear from the local teams about their progress, successes, areas for improvement, and additional support needs.
- ACs will maintain program continuity, address local challenges, and ensure that community-centric outreach and education are consistently delivered across the region.



# Workforce

Workforce plan prioritizes long-term career skills and local job creation through our established presence and success:

- Existing Network of Local Electricians and Contractors
- Infrastructure for Growing the Trade Ally Network
- Ensuring Quality Assurance and HOMES Compliance
- Leveraging and Securing Funding for Workforce Development

***The project team's workforce development plan is critical to building the regional capacity needed to successfully deliver the EBD program in the southern region at scale over the next 5 years. Built on four pillars of success, the project team's workforce plan takes a comprehensive and sustainable approach to creating a skilled, inclusive workforce capable of delivering high-quality direct installations of residential decarbonization measures across Southern California.***

# Community Eligibility

- All households served by the program must be in an under-resourced community, as defined in statute. For this program, an under-resourced community is defined as a community located in one or more of the following geographic areas:
  - Disadvantaged Communities designated by the California Environmental Protection Agency for purposes of Senate Bill 535 (De León, Chapter 830, Statutes of 2012) (required for at least 50 percent of households served in each of the Northern, Central, and Southern regions)
  - Census tracts with median household incomes at or below 80 percent of the statewide median income
  - Census tracts with median household incomes at or below the threshold designated as low-income by the California Department of Housing and Community Development

# Household/Property Eligibility

## Building Types

- Single-family homes.
- Multifamily residential buildings of two or more units.
- Residential buildings such as assisted living facilities, transitional housing, and group homes. This does not include nonresidential buildings used as emergency makeshift shelters.
- Mixed-use buildings that include residential units. Only the residential portion, including common areas, is eligible for the program.
- Manufactured homes, mobile homes, and multifamily manufactured homes, as defined in Health and Safety Code Section 18007 et seq.
- Eligible buildings may be either owner-occupied or rented.

## Eligible Fuel Types

- To be eligible, buildings must use natural gas, propane, or another fossil fuel as the primary fuel for space heating or water heating

# Income Eligibility

## Multifamily building:

- At least 66 percent of households earn less than or equal to 80 percent of AMI, or
- Rent for at least 66 percent of units are affordable to such households.

## Income verification options:

- Rent regulatory agreement
- Pay stubs or tax returns of occupants
- Documentation showing that at least 66 percent of households are enrolled in income-qualified programs
- Documentation showing that rent for at least 66 percent of units is affordable to households with income equal to 80% of AMI

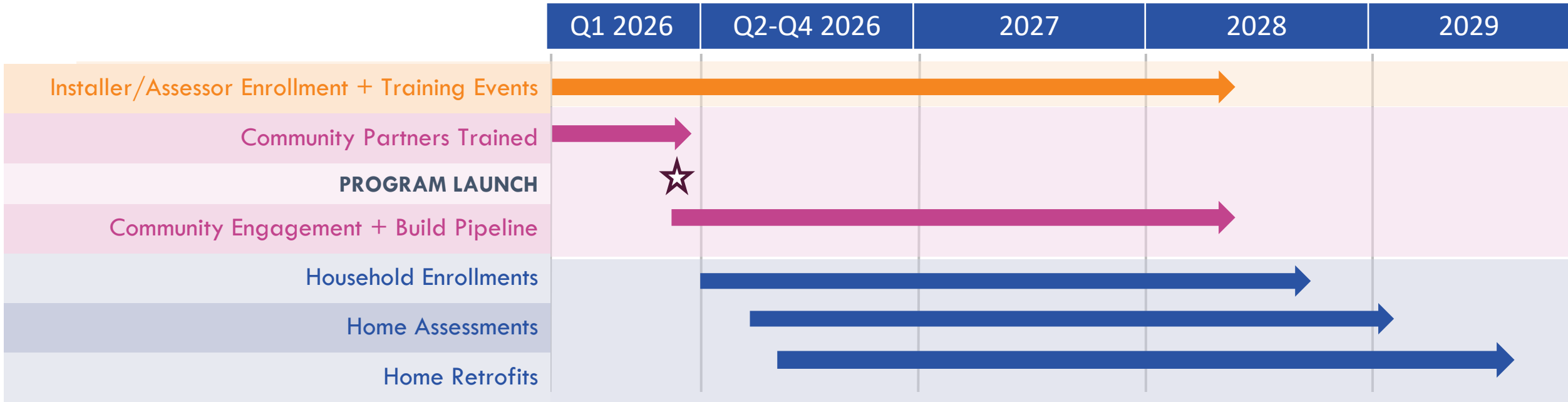
## Single-family homes:

- Occupied by low-income or moderate-income households
- Low-income:  $\leq 80\%$  of the local area median income (AMI)
- Moderate-income: 80-120% of AMI

## Income verification options:

- Federal tax returns
- Pay stubs
- Proof of enrollment in another income-qualified program

# Program Timeline



-  **Workforce Development**
-  **Community Engagement**
-  **Implementation**

# Rapid Start

Delivering one multifamily rapid-start project anticipated completion by 5/15/26

Project Name	Location/ ICFA	Measures	Buildings	Units	Equipment Qty	Total Project Cost
McKinney Manor	San Diego/ STORM	<ul style="list-style-type: none"><li>• HPWH</li><li>• Induction Range</li><li>• Wiring</li></ul>	1	50	50	\$1,291, 588



# Connecting with the EBD Program

EBD Southern Region Website: <https://socalebd.org/>

Assessor Enrollment portal: [Link](#)

Installer Enrollment portal: [Link](#)



# Discussion

*Please add questions  
in the chat*

## Q&A and Discussion



# Announcement : CCEC Forum

## 17th Annual CCEC Forum

Grounded in People, Guided by Possibility:  
Shaping our Future in a Changing California.

 **June 24-25, 2026**

 **Hilton LA/Universal City  
555 Universal Hollywood  
Dr, Universal City, CA**

**Register Now!**

 Contact Us  
[ee coordinator@civicwell.org](mailto:ee coordinator@civicwell.org)

 Visit Our Website  
[ee coordinator.info/](http://ee coordinator.info/)



## Early Registration Open Until April 26th!

Los Angeles, CA | June 24 & 25

*Locals encouraged to add June 23rd  
SLECC meeting when you register*

[Room block reservations open now!](#)

# Local Energy Resources Network



## What's Next?

- Bonus Breakouts up next!
- Next meeting **May 12th**
- Share [invitation](#) with others

See you next time!



# Optional: Bonus Breakouts

***Thanks for joining us!***

This is a space for informal discussion among the LERN network. Feel free to:

- Offer an announcement, success story, or opportunity
- Share a need for information, collaborators, or advice
- Raise a suggested topic or speaker for future LERNS

If you need an in-depth discussion, you can pitch a specific bonus breakout topic and invite others to join you (today or we can plan ahead for next month)



# CCEC Serves Local Needs



[wEEkly Update](#)



[CURRENTS Quarterly](#)



[Webinars](#)



[Annual Forum](#)



[Active Funding Opportunities](#)



[Funding Program Database](#)



[Technical Assistance](#)



[Technical Assistance Directory](#)



[Local Government Roundtables](#)



[Best Practice Database](#)



[Interviews and Case Studies](#)